



**NFK GLAZING & INDUSTRIAL SUPPLIES**

*Specialist Suppliers of Quality Glazing Tools & Architectural Hardware*

## MVW15 Slim-line sliding door system



**NFK GLAZING & INDUSTRIAL SUPPLIES**

*Specialist Suppliers of Quality Glazing Tools & Architectural Hardware*

28 Devlan Street, Mansfield QLD 4122 :: Freecall 1800 064 596  
Tel. 07 3343 3377 :: Fax. 07 3343 6877 :: sales@nfk.com.au :: www.nfk.com.au





## MVW15 Ceiling Mount with fixed panel below track

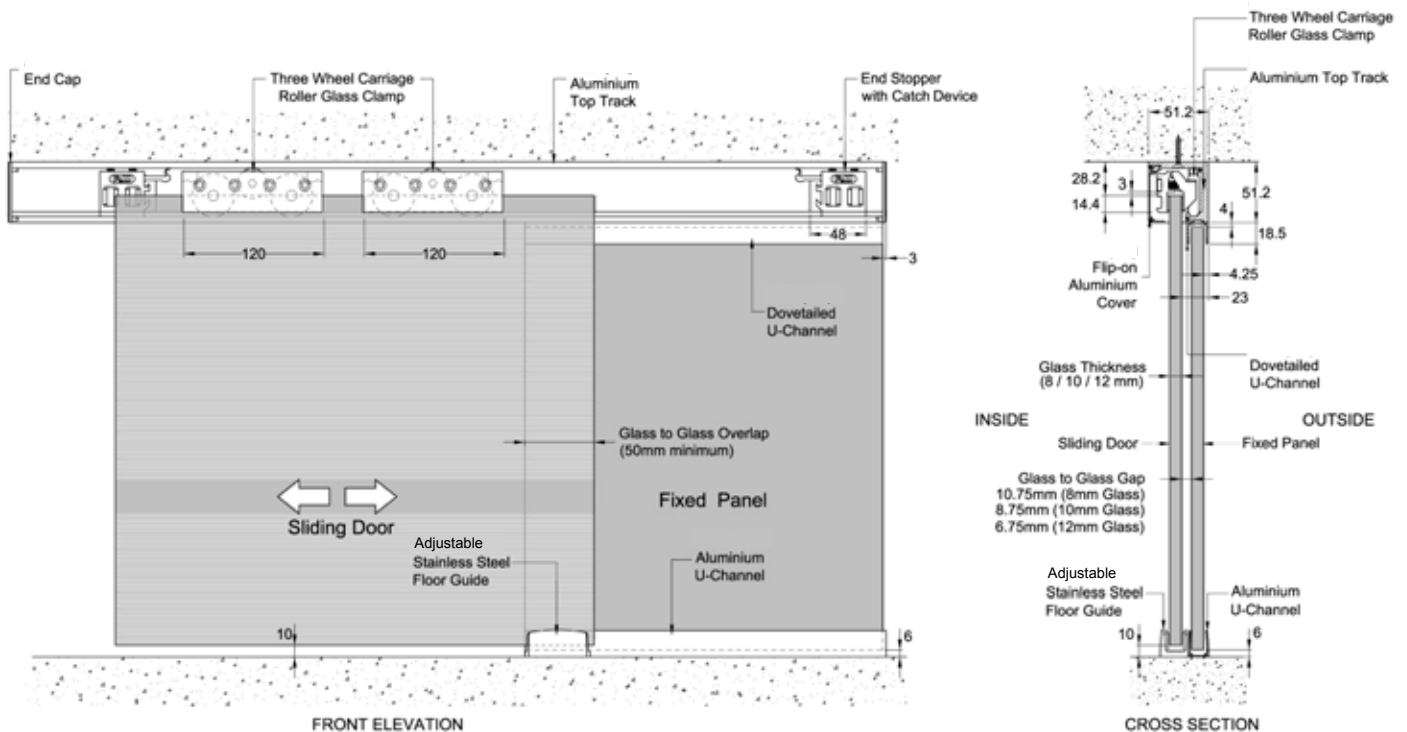


**Ceiling mount sliding door system** is available with the following standard components as a complete system:

- Aluminium top track
- Three wheel carriage roller glass clamp (x2)
- Flip-on aluminium cover
- End stopper with catch device (LH & RH) (1 pair)
- End cap (LH & RH) (1 pair)
- Adjustable Stainless Steel floor guide (x1)

**For fixed panel mounted below track**

- Dovetailed U-Channel
- Bottom U-Channel





## MVW15 Ceiling Mount with fixed panel behind track

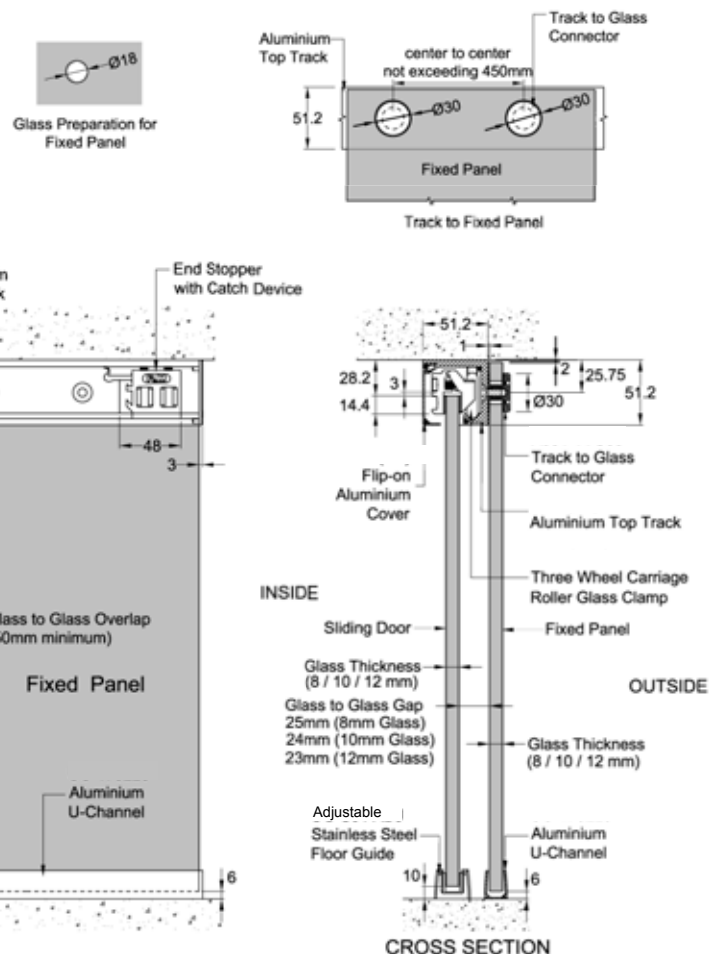


**Ceiling mount sliding door system** available with the following standard components as a complete system:

- Aluminium top track
- Three wheel carriage roller glass clamp (x2)
- Flip-on aluminium cover
- End stopper with catch device (LH & RH) (1 pair)
- End cap (LH & RH) (1 pair)
- Track to glass clamp (x6)
- Adjustable Single-U Stainless Steel floor guide (x1)

**For fixed panel behind track**

- Bottom U-Channel





## MVW15

### Overpanel and fixed panel mounted

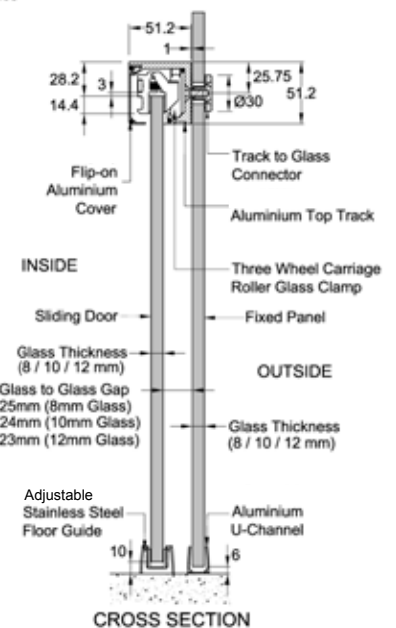
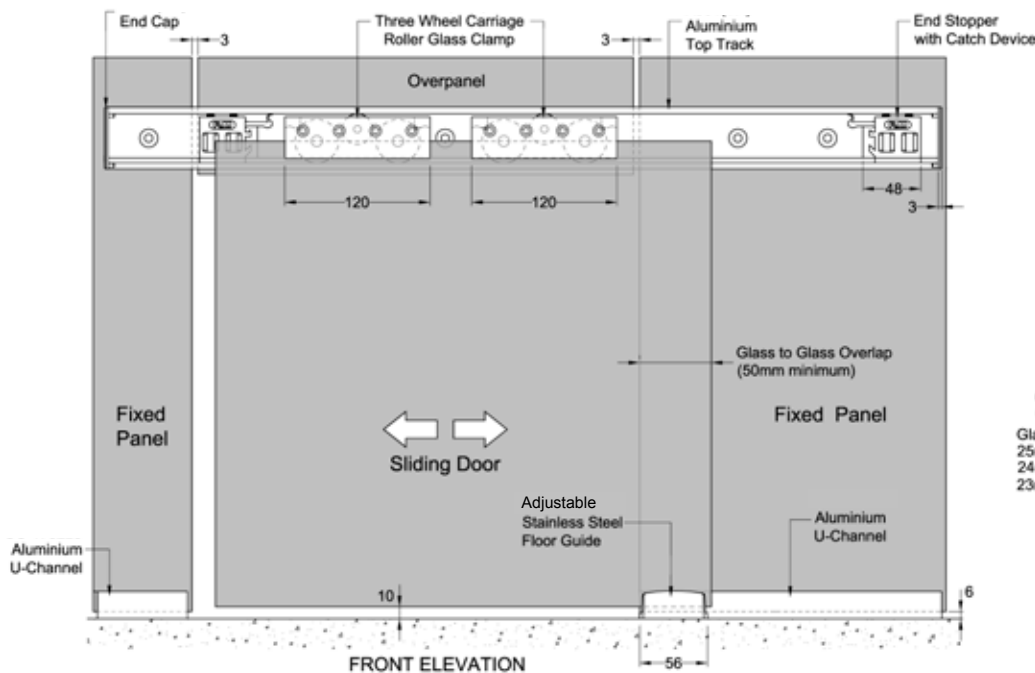
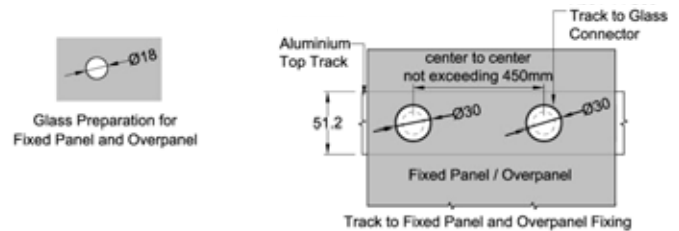


**Overpanel & fixed panel mounted sliding system** is available with the following standard components as a complete system:

- Aluminium top track
- Three wheel carriage roller glass clamp (x2)
- Flip-on Aluminium cover
- End stopper with catch device (LH & RH) (1 pair)
- End cap (LH & RH) (1 pair)
- Track to glass clamp (x6)
- Adjustable Single-U Stainless Steel floor guide (x1)

#### For fixed panel

- Bottom U-Channel





## Door Specification

- Maximum Door Width : 1000mmW
- Maximum Door Height : 3000mmH
- Maximum Door Weight : 120kg
- Glass Thickness: 8–12mm

*Due to the company's policy of continuous product development and enhancement, the specifications and details contained in this brochure are subject to alteration without prior notice.*

*The dimensions, details, specifications and statements made herein or by our representatives arising out of any enquiries are given for information purposes only. They are not intended to have any legal effect and the company will not be bound thereby. The company will only accept obligations which are expressly negotiated for, and agreed and incorporated into written agreements made specifically with its respective customers.*

## Door Handles



## 60ø Finger pull

