



90 Degree Horizontal Joiner

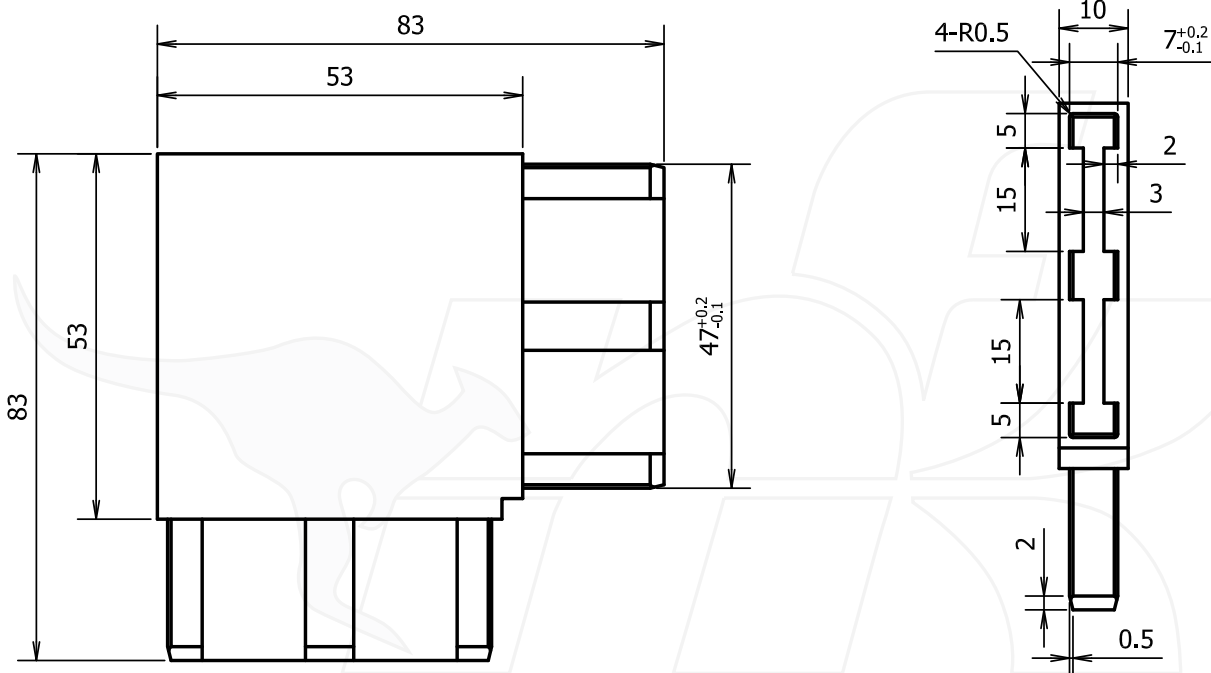
Suitable for connecting 10 x 50mm handrail tube at 90 degree corners.

High quality finished 316 stainless steel.

Tap-in fit is strong and stable when used in conjunction with Loc-tite adhesive.

Joints can be made structural by welding or drilling and tapping through the tube.

Joiners are designed for use with NFK's 10 x 50mm RHS s/s tube.



Description	Code
Satin Finish	90-20114
Polished Finish	90-20115



180 Degree Horizontal Joiner

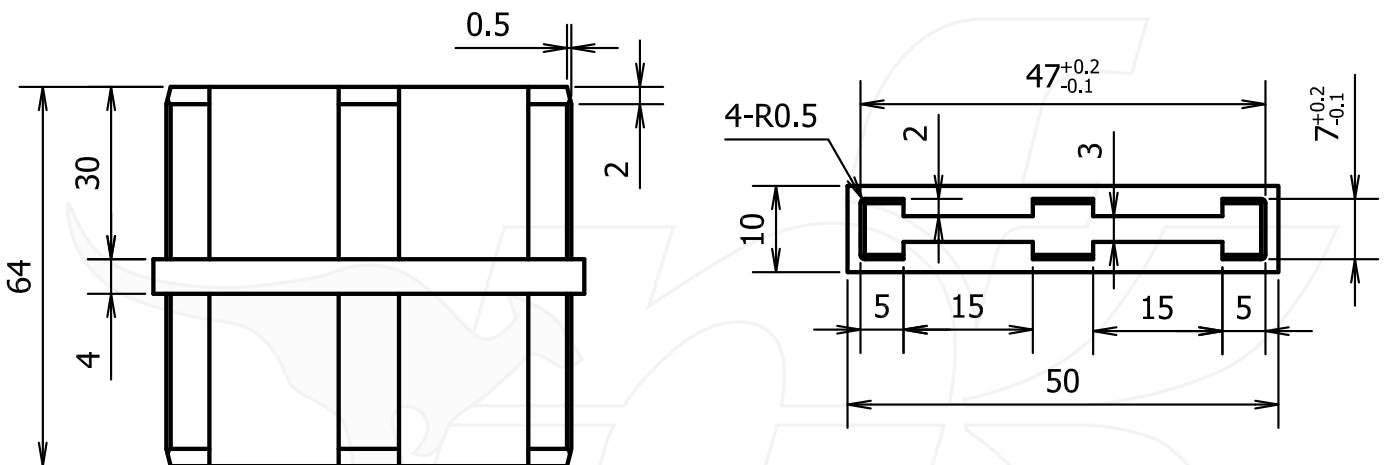
Suitable for connecting 10 x 50mm handrail tube at 180 degree corners.

High quality finished 316 stainless steel.

Tap-in fit is strong and stable when used in conjunction with Loctite adhesive.

Joints can be made structural by welding or drilling and tapping through the tube.

Joiners are designed for use with NFK's 10 x 50mm RHS s/s tube.



Description	Code
Satin Finish	90- 20110
Polished Finish	90- 20111



Adjustable Joiner

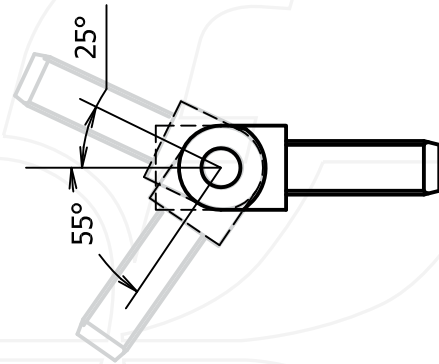
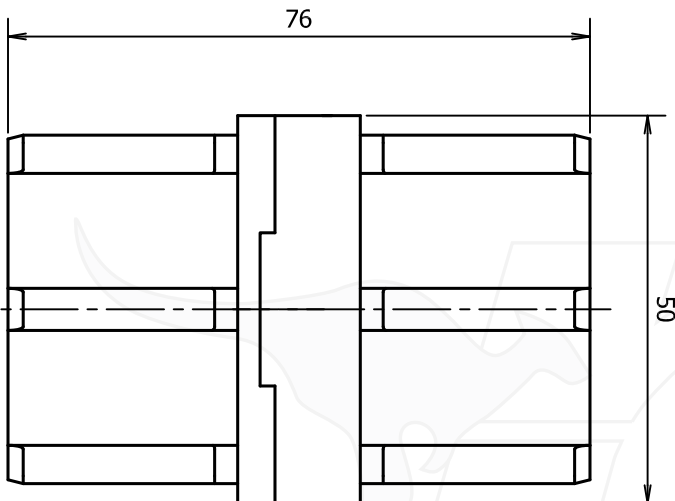
Suitable for connecting 10 x 50mm handrail tube when used on stairways.

High quality finished 316 stainless steel.

Tap-in fit is strong and stable when used in conjunction with Loctite adhesive.

Joints can be made structural by welding or drilling and tapping through the tube.

Joiners are designed for use with NFK's 10 x 50mm RHS s/s tube.



Description	Code
Satin Finish	90-20118
Polished Finish	90-20119



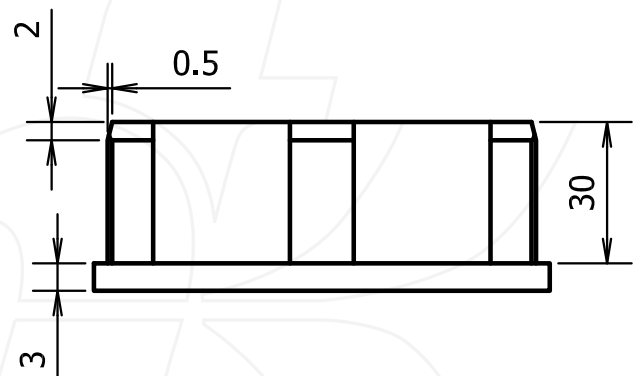
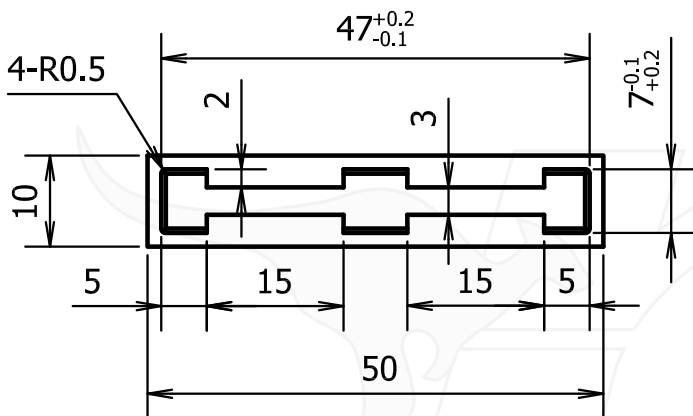
End Cap

End Cap to suit 10 x 50mm handrail tube.

High quality finished 316 stainless steel.

Tap-in fit is strong and stable when used in conjunction with Loctite adhesive.

Designed for use with NFK's 10 x 50mm RHS s/s tube.



Description	Code
Satin Finish	90-20112
Polished Finish	90-20113



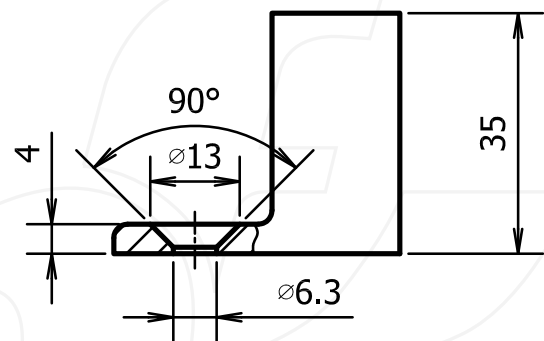
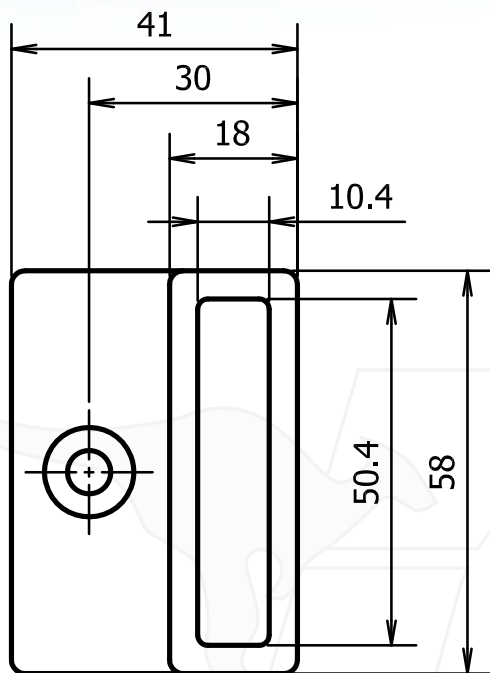
Wall Plate

Suitable for connecting 10 x 50mm handrail tube to walls or posts.

High quality finished 316 stainless steel.

Joints can be made structural by welding or drilling and tapping through the tube.

Designed for use with NFK's 10 x 50mm RHS s/s tube.



Description	Code
Satin Finish	90-20116
Polished Finish	90-20117