

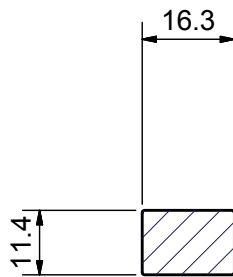
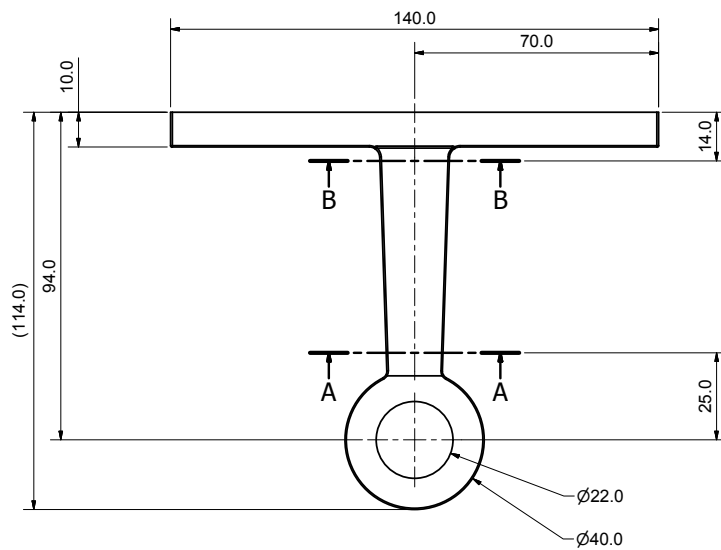
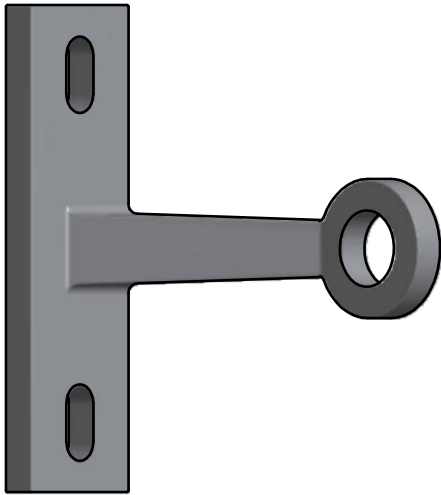
Fin Spider Heavy Duty 1 Arm

Heavy Duty Fin Spiders are suitable for large panels of glass due to their increased size and loading capacity.

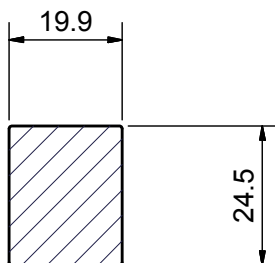
High quality finish in either satin or mirror polish.

Cast in 316 stainless steel or higher.

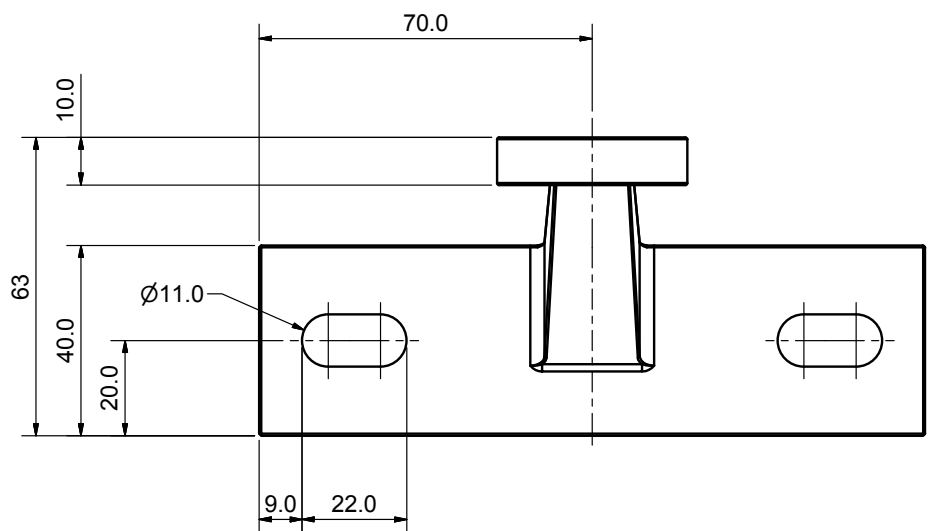
Point fixing options and technical guidance or full engineering is available.



SECTION-A-A



SECTION-B-B



Description	Code
Fin Spider, Heavy Duty Single Arm 90°, Satin Finish	41-1001.01.77
Fin Spider, Heavy Duty Single Arm 90°, Polished Finish	41.1001.01.99



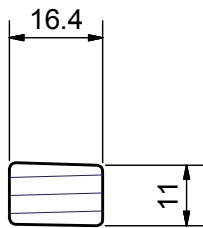
Fin Spider Heavy Duty 1 Arm 45° Wall

Heavy Duty Fin Spiders are suitable for large panels of glass due to their increased size and loading capacity.

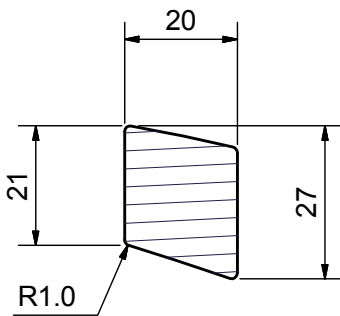
High quality finish in either satin or mirror polish.

Cast in 316 stainless steel or higher.

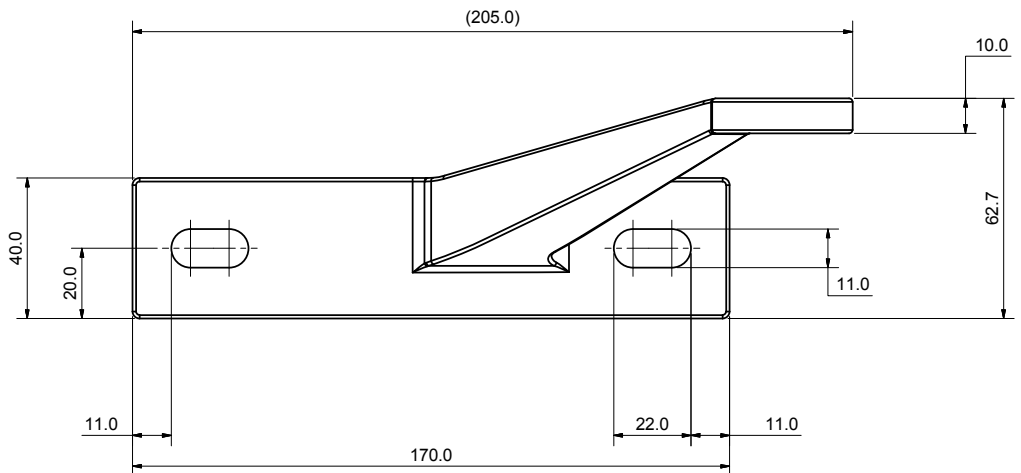
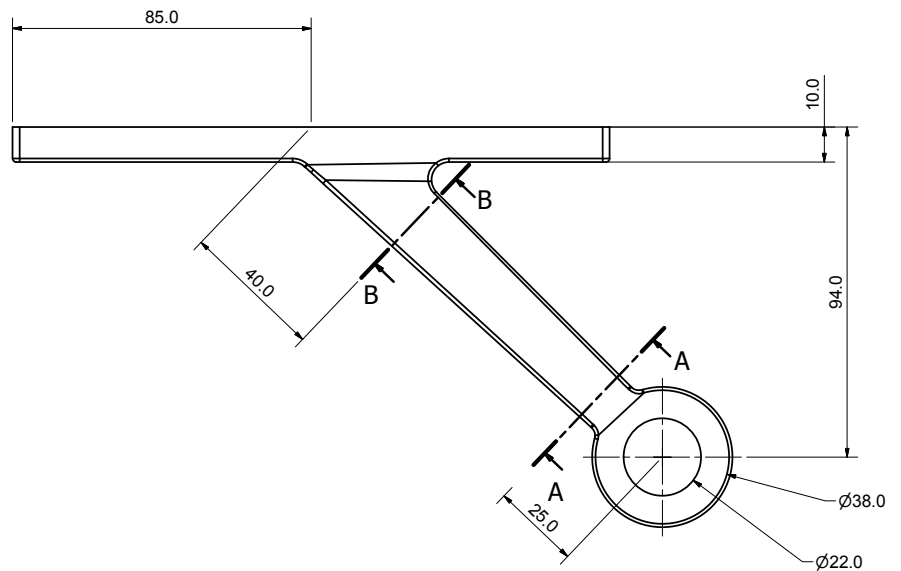
Point fixing options and technical guidance or full engineering is available.



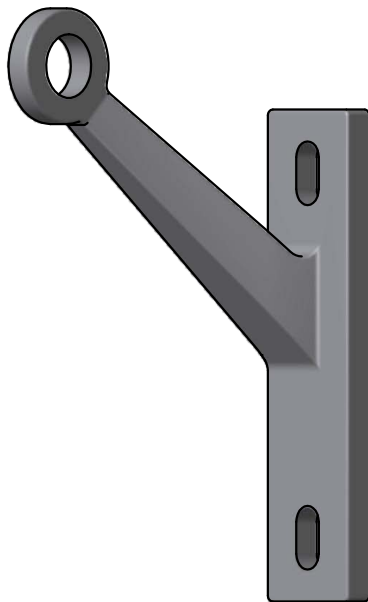
SECTION-A-A



SECTION-B-B



Description	Code
Fin Spider, Heavy Duty Single Arm 45° Right, Satin Finish	41-1001.03.77
Fin Spider, Heavy Duty Single Arm 45° Right, Polished Finish	41-1001.03.99



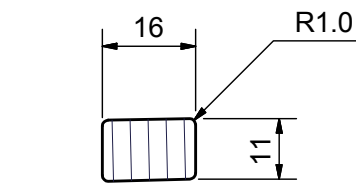
Fin Spider Heavy Duty 1 Arm 45° Wall

Heavy Duty Fin Spiders are suitable for large panels of glass due to their increased size and loading capacity.

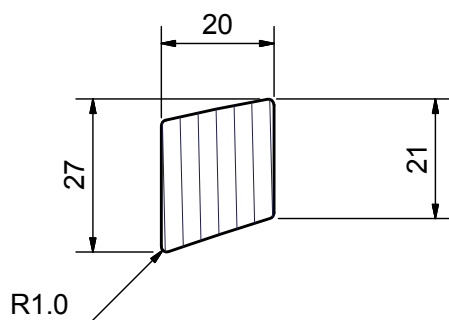
High quality finish in either satin or mirror polish.

Cast in 316 stainless steel or higher.

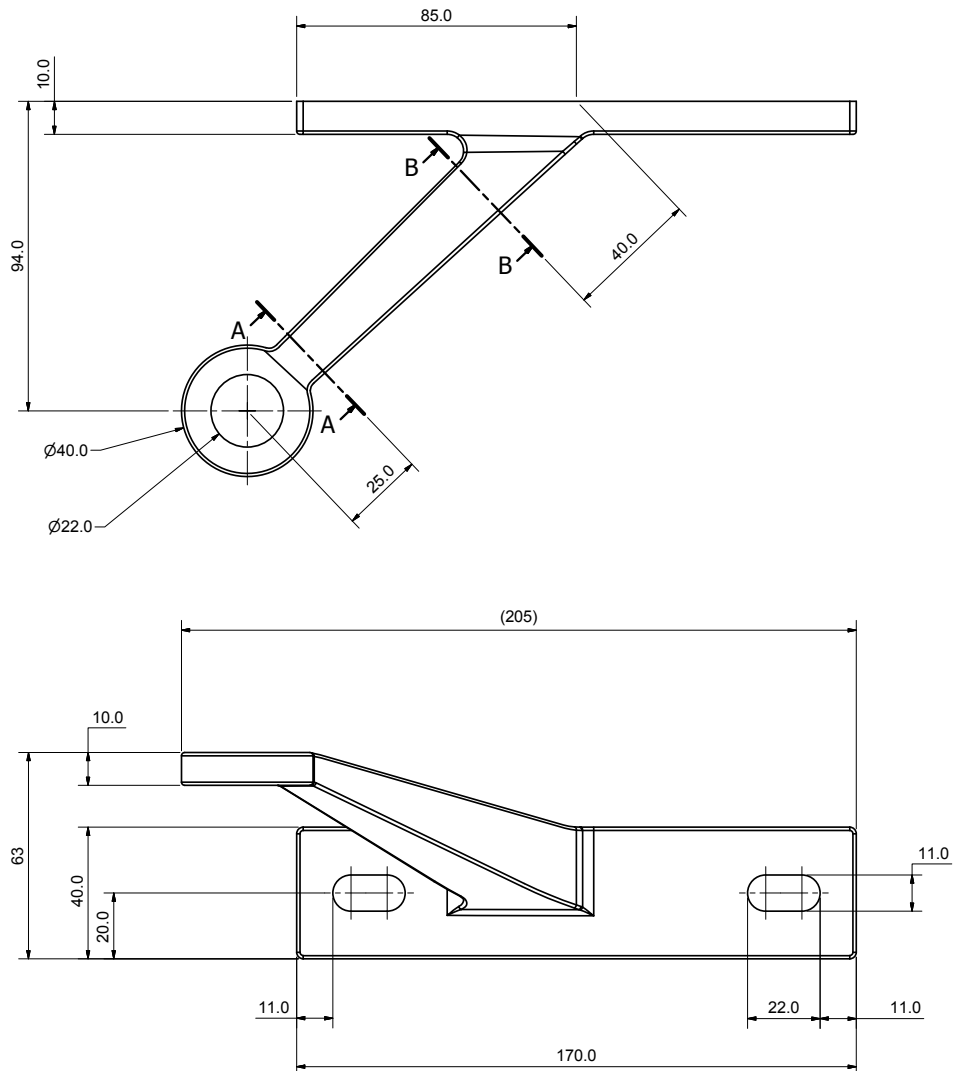
Point fixing options and technical guidance or full engineering is available .



SECTION-A-A



SECTION-B-B



Description	Code
Fin Spider, Heavy Duty Single Arm 45° Left, Satin Finish	41-1001.02.77
Fin Spider, Heavy Duty Single Arm 45° Left, Polished Finish	41-1001.02.99



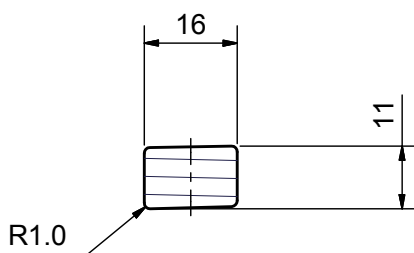
Fin Spider Heavy Duty 2 Arm 45° Wall

Heavy Duty Fin Spiders are suitable for large panels of glass due to their increased size and loading capacity.

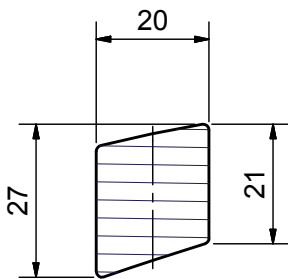
High quality finish in either satin or mirror polish.

Cast in 316 stainless steel or higher.

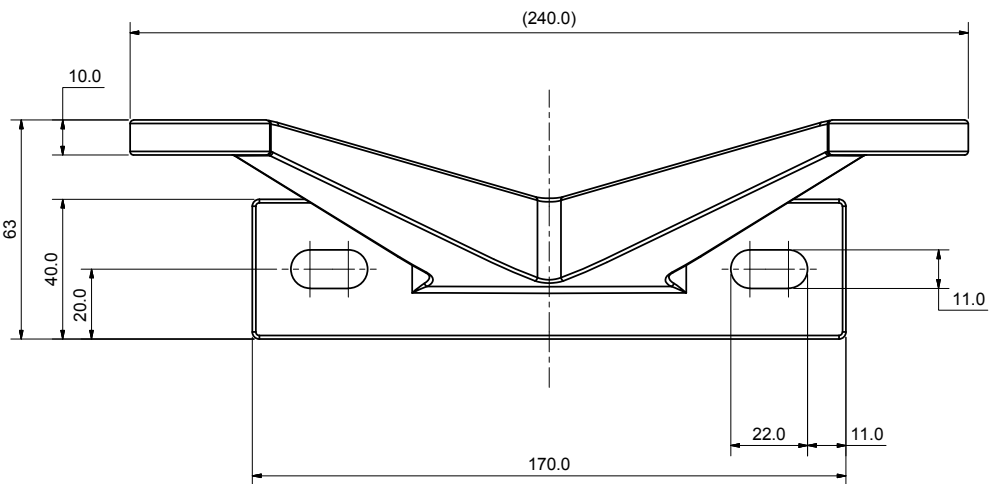
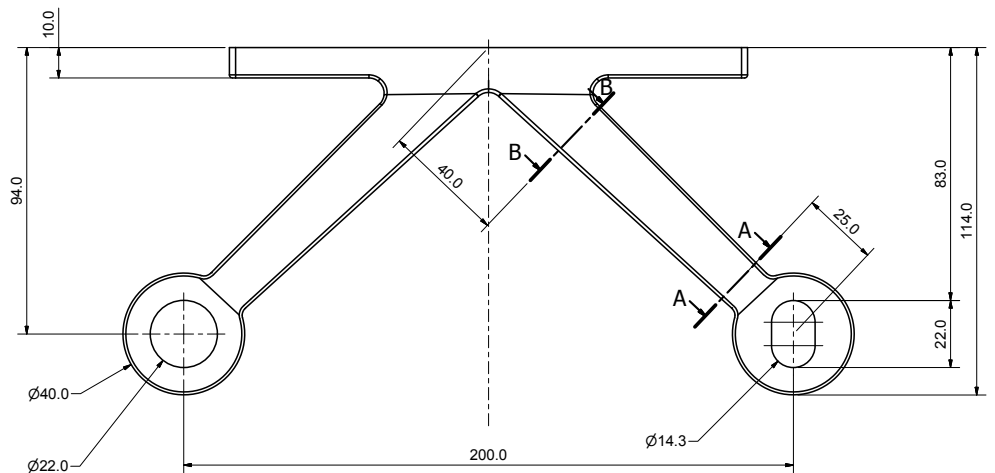
Point fixing options and technical guidance or full engineering is available .



SECTION-A-A



SECTION-B-B



Description	Code
Fin Spider, Heavy Duty Two Arm 45°, Satin Finish	41-1001.04.77
Fin Spider, Heavy Duty Two Arm 45°, Polished Finish	41-1001.04.99