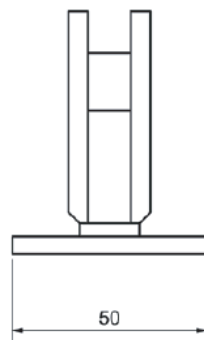
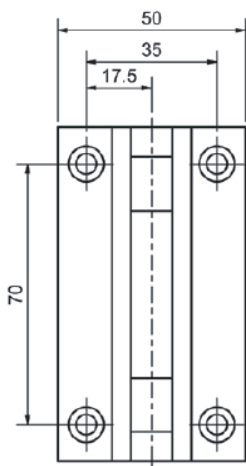
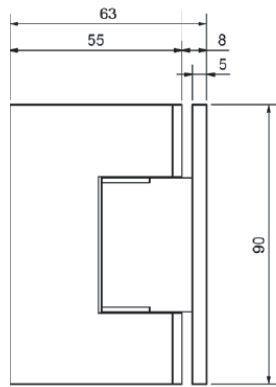




Frameless Shower-Screen Hardware | Hinges | X1

HINGE X1 90° Wall to Glass Full Back Square

- 90° Wall to Glass with full back square plate
- Suitable for glass 8 mm - 10 mm
- High-quality components and surface finish
- Suggested door weight / width with 2 hinges - 35 kg / 710 mm
- Suggested door weight / width with 3 hinges - 54 kg / 810 mm
- Suits Rabbit Ear cut out



DESCRIPTION	CODE
Chrome	19-SH/052C
Matt Black	19-SH/052MB
Brushed Nickel	19-SH/052BN
Other finishes	Contact NFK

