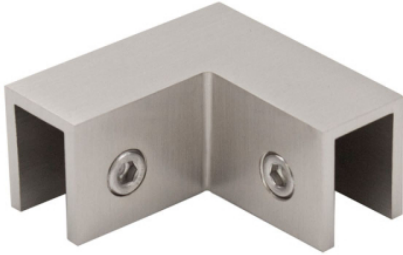




90° "Sleeve Over" Clamp



- 90° "Sleeve Over" Glass Clamp with PVC clear gaskets
- For use with glass from 8mm to 12mm thick
- Square profile
- No glass fabrication required
- Manufactured from high-quality brass
- Eliminates glass panel misalignment at the top edge of the glass
- Great for holding glass panels together while silicone sealant cures
- Keeps panels from separating over time

| finish | glass thickness | code |
|----------------|-----------------|----------------------|
| Chrome | 8mm to 12mm | 19-SH/AA-SOC9010SQ |
| Brushed Nickel | 8mm to 12mm | 19-SH/AA-SOC9010BN |
| Matte Black | 8mm to 12mm | 19-SH/AA-SOC9010SQMB |

