

TRACK MOUNT FOR GLASS INSTALLATION

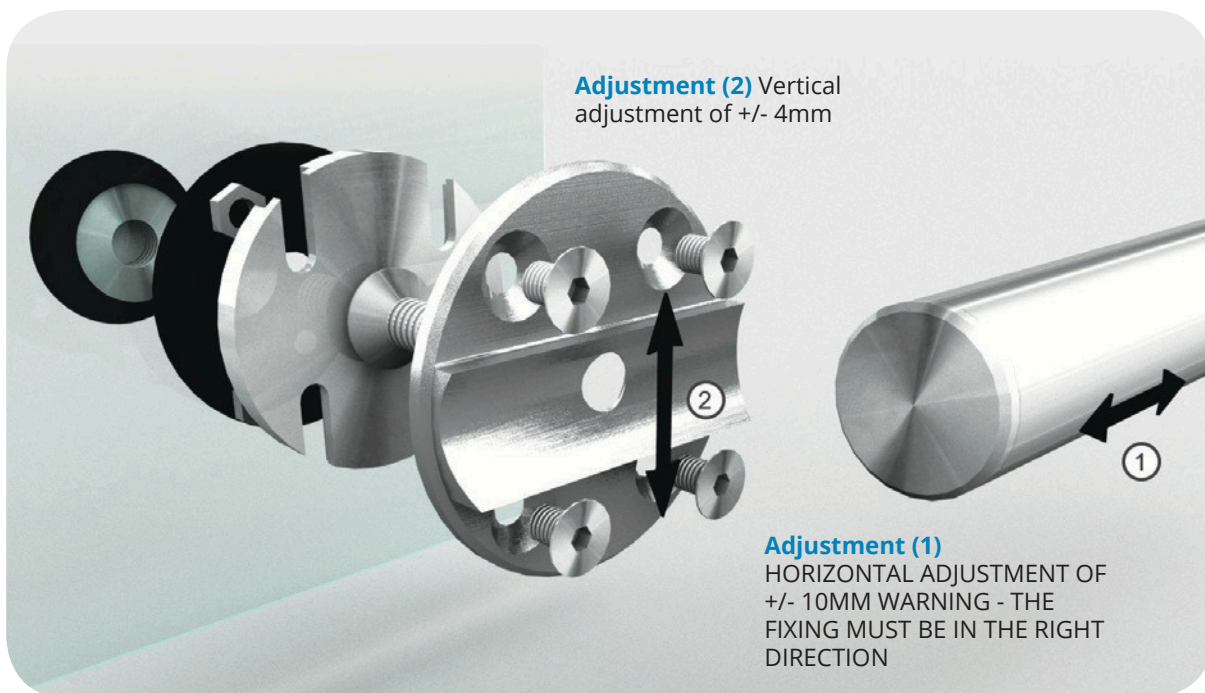


The connection between the track and mount is done by drilling the track and installing an insert, which allows for greater strength and adjustment when positioning the track.

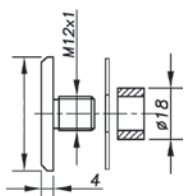
The mount can be attached to side-lite or high-lite glass panels. Creating a frameless floating track that is still easy to install. This highly engineered fitting can accommodate up to 4mm in vertical adjustment, allowing the door track to be levelled perfectly, and up to 10mm of horizontal adjustment.

Connection through fixed glass panels can be with either 40mm low-profile caps or countersunk caps.

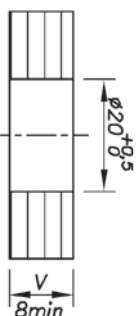
Description	Part Number
Track Mount for Glass	89-0009



Type of Screw



Glass Drilling



2 fixing points per glass panel

