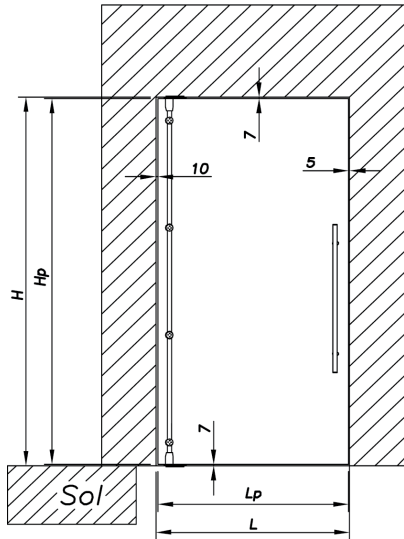


# PIVOTING DOORS 25° LONG

**SADEV**decor

# Single door with solid surround



## Pivot25-FS

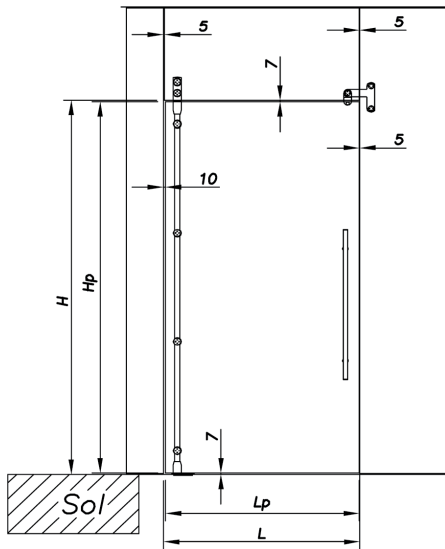
With the pivot rod supported between floor and transom, this simple installation method guarantees to make a feature of the petite but strong 25mm Pivot rod and point fixings.

In this configuration, it is possible to use either In-floor or Concealed Overhead Hydraulic Closers. Heavy duty pivot blocks are also available for top and bottom, to create free swinging doors.

All configurations of the Pivot25 are capable of carrying a door weight of 90kg, thus allowing for doors up to 2000mm in height or 1200mm wide.

<b>Part No.</b>	89-000.2201	2000mm rod, complete with all fixings
-----------------	-------------	---------------------------------------

# Single door with high-lite & one fixed side lite



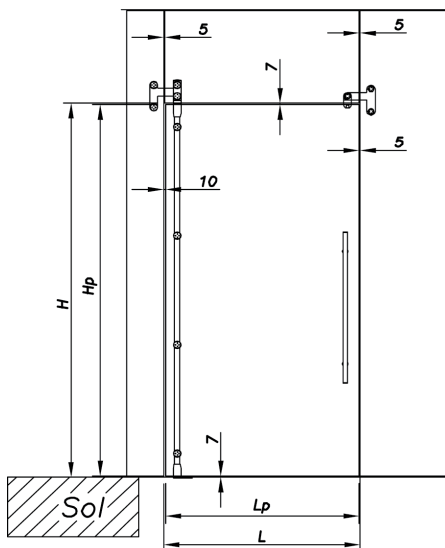
## Pivot25-HS

With overhead glazed panels spanning from top of door to ceiling and one full height fixed glass side-lite. This configuration is extremely flexible in its use. Side-lites as narrow as 150mm can be used.

The Straight top pivot which attaches to the high-lite panel has been designed to create an extension of the pivot rod.

<b>Part No.</b>	89-000.2202	2000mm rod, complete with all fixings
-----------------	-------------	---------------------------------------

# Single door with full glass surround



## Pivot25-FF

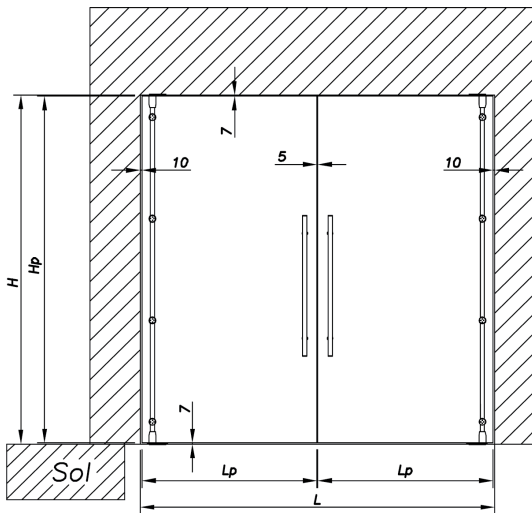
With an overhead glazed panel spanning from top of door to ceiling and two full height fixed glass side-lites, this creates a truly transparent facade. The unique Pivot25-FF hardware compliments doors to offer a refined elegance.

Matching inter-connecting top corner patches offer increased rigidity to the facade, while supporting the top pivot and optional door stop.

<b>Part No.</b>	89-000.2203	2000mm rod, complete with all fixings
-----------------	-------------	---------------------------------------

H: Opening height, Hp: Glass height, L: Opening width, Lp: Glass Width

# Double doors with solid surround



## Pivot25-DFS

With the pivot rod supported between floor and transom, this simple installation method guarantees to make a feature of the 40mm Pivot rod and point fixings.

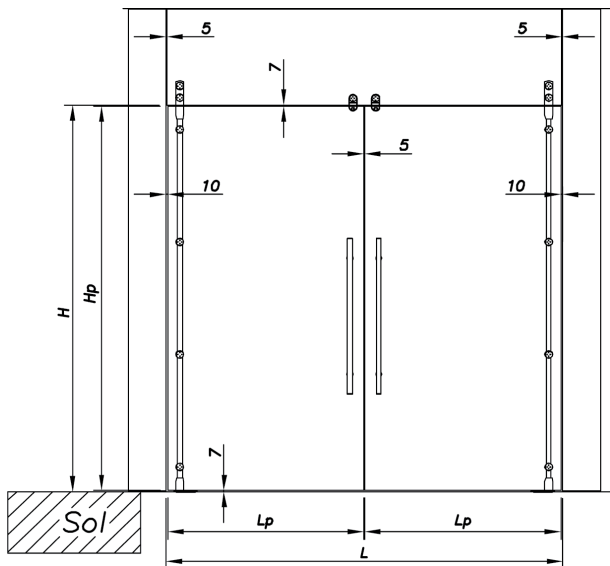
This lightweight refined version of the Pivot40 is suited to medium traffic applications such as office doors, meeting rooms and private homes.

In this configuration, it is possible to use either In-floor or Concealed Overhead Hydraulic Closers. Heavy duty pivot blocks are also available for top and bottom, to create free swinging doors.

Part No. 89-000.2204

2000mm 2 x rods, complete with all fixings

# Double doors with glass high-lite



## Pivot25-DHS

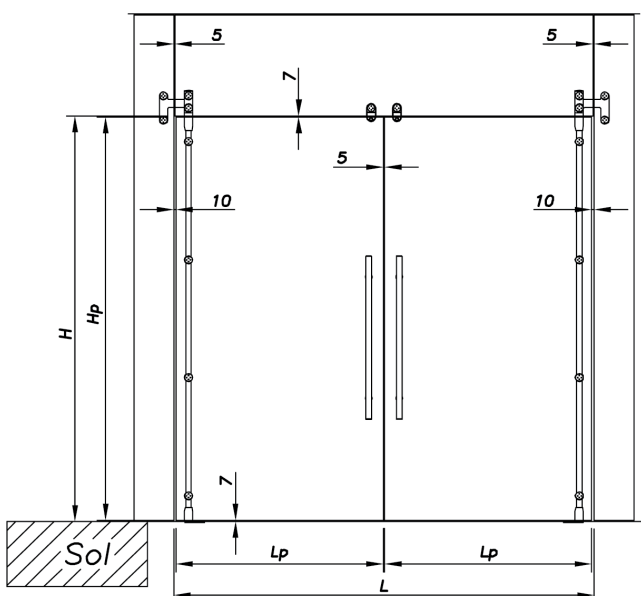
With doors able to span an opening 2400mm wide x 3000mm high, utilising a 1000mm high-lite panel, this configuration is simple to install while creating an individual look.

The Straight top pivots which attach to the high-lite panels have been designed to create an extension of the pivot rods, maintaining the vertical appearance of all hardware.

Part No. 89-000.2205

2000mm 2 x rods, complete with all fixings

# Double doors with full glass surround



## Pivot25-DFE

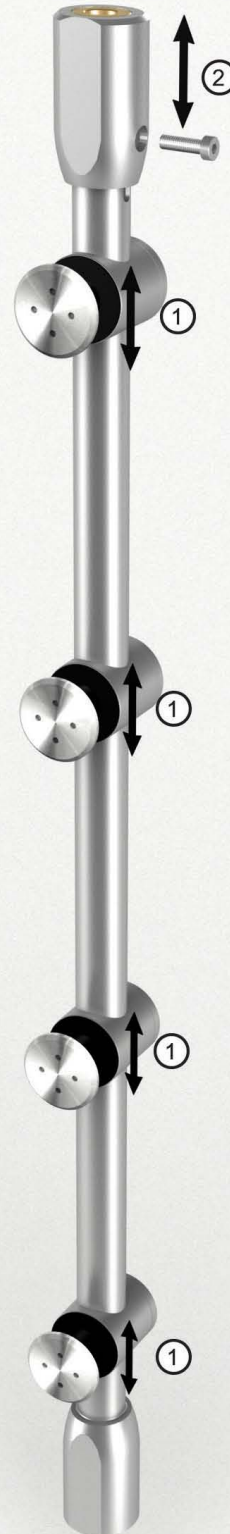
With an overhead glazed panel spanning from top of door to ceiling and two full height fixed glass side-lites, this creates a truly transparent facade. The unique Pivot25-FF hardware compliments doors that require a refined elegance.

Matching inter-connecting top corner patches offer increased rigidity to the facade while supporting the top pivot and optional door stop. Highly suited to premium shopfront installations or office partitioning that requires a stand-out feature.

Part No. 89-000.2206

2000mm 2 x rods, complete with all fixings

# Pivot long rod 25ø



## Top rotation unit (2)

The top pivot is interchangeable to suit various door configurations.

## Adjustment (1)

Unlimited vertical adjustment.

## Screws for glass

Standard-cylindrical.  
Others on request.

## Number of connection points

If the distance between 2 tubes / door connections is more than 700mm, then an additional connection point must be added.

## Bottom rotation unit

The bottom rotation unit is a single piece with the bar. It is available for the floor brake and the bearing plate on free shaft.

# Pivot long rod 25ø

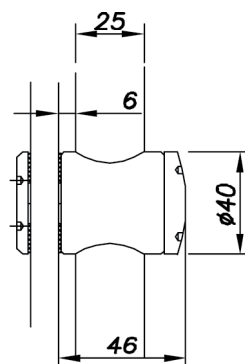
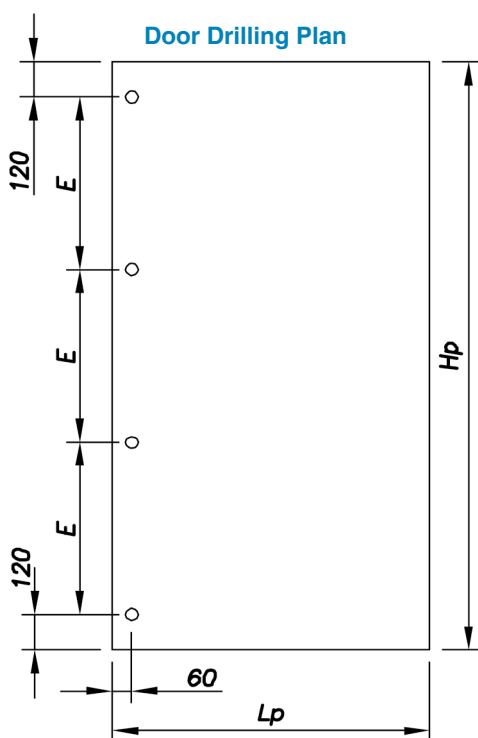
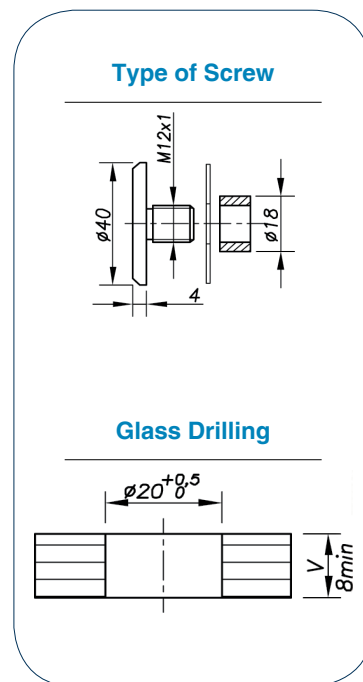
The Pivot 25 system revolves around the refined 25mm diameter pivot rod which runs full height of the glass door. Attached are four highly machined nodes which are able to slide along the rod to the desired location, where they will be permanently fixed in place.

Rods can be supplied to suit In-ground or Concealed Overhead Door Closers. Standard assembly is for floor closers.

Supplied in a standard length 2000mm as "kit form" or, cut to length and fully assembled, ready for installation.

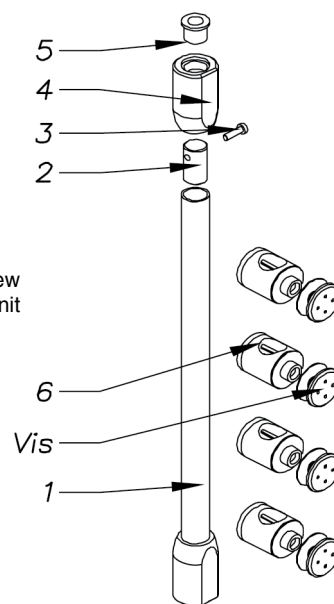
All components in the Pivot 25 system are manufactured from 316 stainless steel.

Description	Part Number
Pivot Long Rod 25ø	89-0017



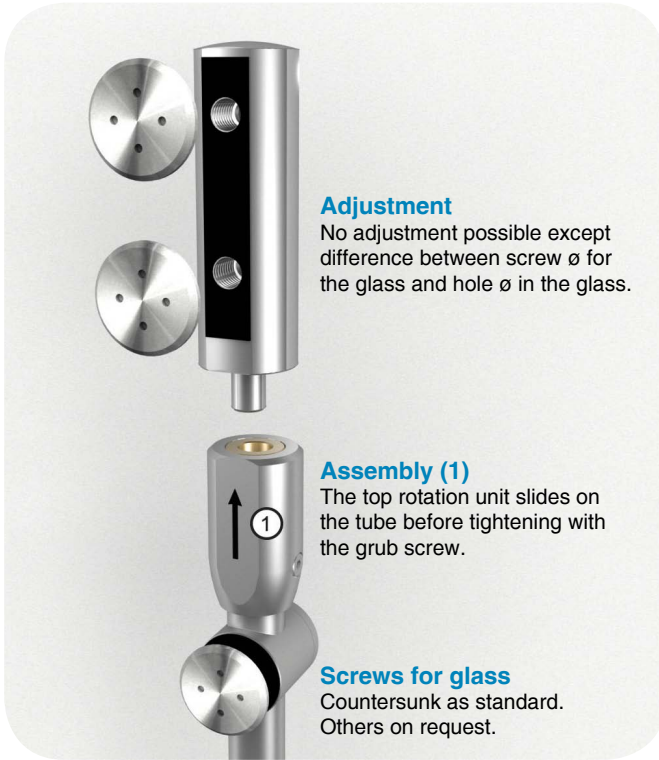
## Description

- (1) Pivot tube
- (2) Inserts
- (3) Assembly screw
- (4) Top rotation unit
- (5) Guiding pin
- (6) 03 32 30 40



When ordering, give us only the height dimension. We calculate the height x of the necessary bar.

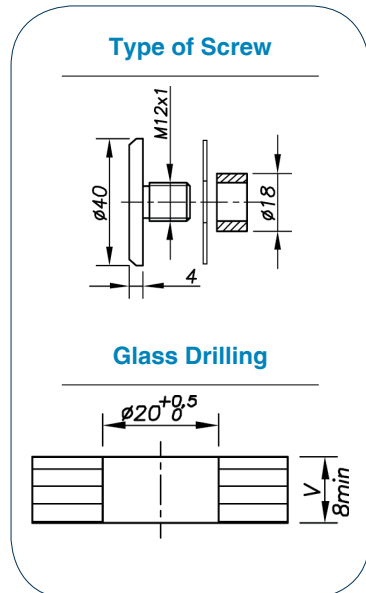
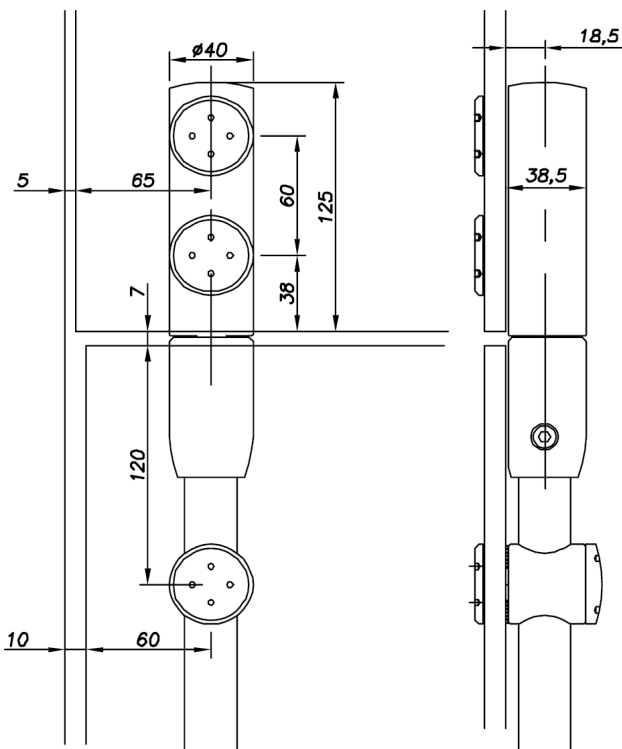
# Direct top pivot for transom panel



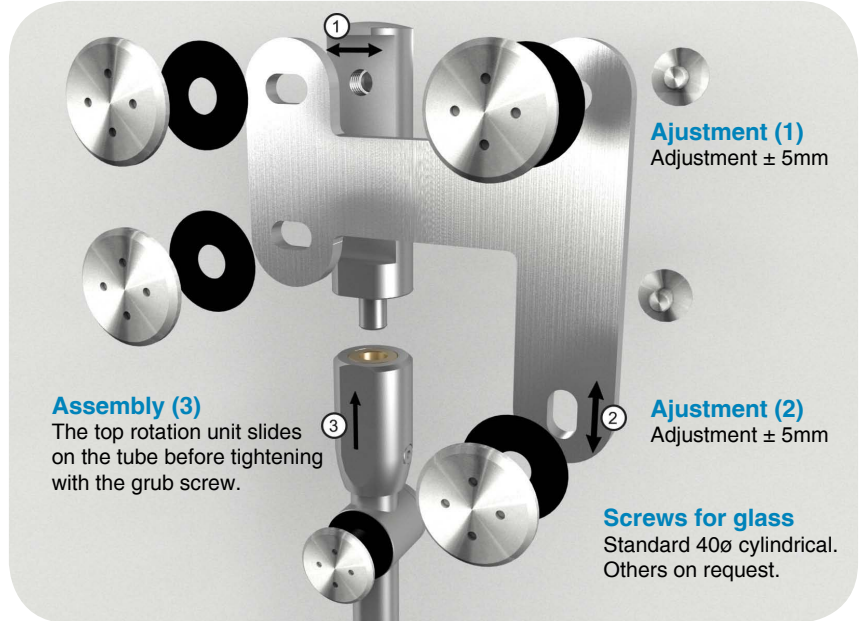
This top pivot is used when a glass high-lite panel is incorporated above the door. Machined from 40mm solid round bar, this pivot appears as an extension of the full length pivot rod.

Fitted with two 40mm diameter point fixings to ensure the stability of the pivot.

Glass Thickness	Part Number
8 to 12mm Standard	89-0018



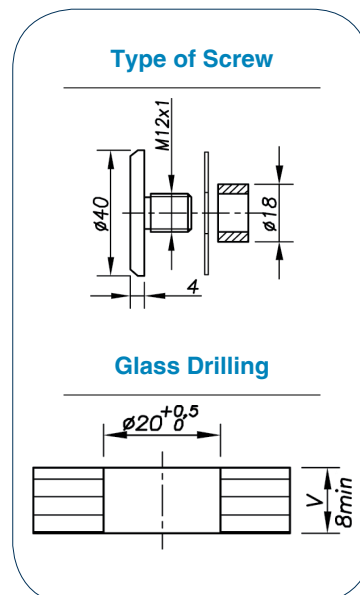
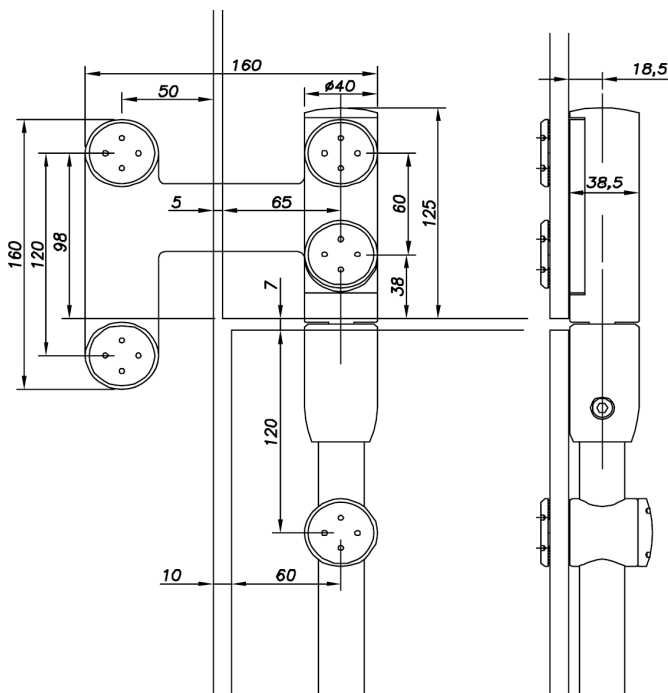
# Top Pivot for connection to Side-lite and High-lite



This assembly is used to tie the two fixed glass panels together, in addition to mounting the top pivot above the door. The L plate is fabricated from 10mm thick stainless while the pivot is machined from 40mm solid round bar.

Fitted with two 40mm diameter point fixings on each panel to ensure the stability of the pivot and surrounding glass.

Glass Thickness	Part Number
8 to 12mm	89-0019

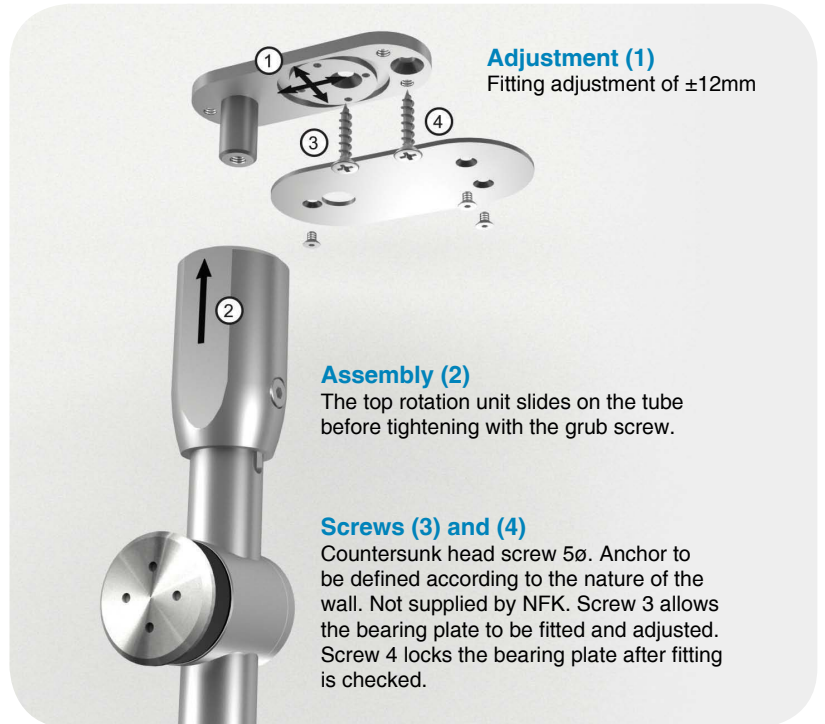
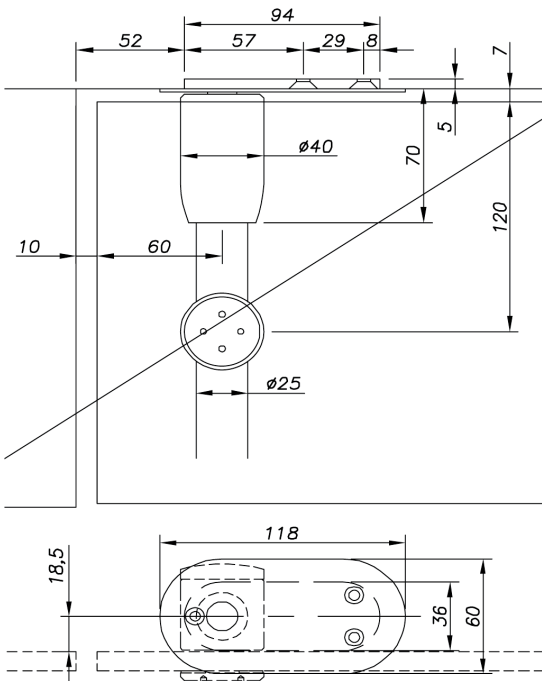


# Adjustable top pivot

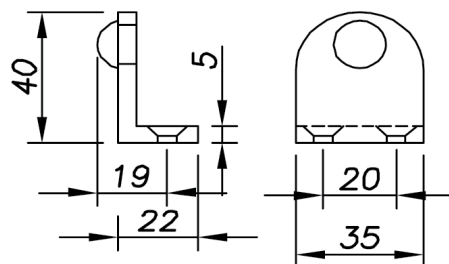


Low profile free pivot for top of door. This pivot is suitable for use on masonry, timber or metal door heads.

Description	Part Number
Adjustable Top Pivot	89-0018.200



# Door stop on floor/ wall/ ceiling



Fabricated from 5mm thick stainless steel, this universal stop can be located on floor or ceiling to stop the door swinging both directions. Fitted with a small rubber bumper to avoid glass damage.

Description	Part Number
Door Stop	89-0018.350

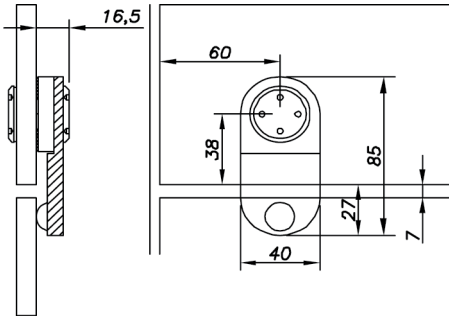


# Door stop on glass, direct fitting to the transom panel

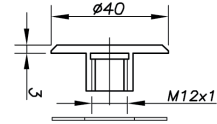


Specifically designed to be fixed to overhead glass panels, this inconspicuous stop is in keeping with all other fittings and can also be mounted to a corner L plate assembly.

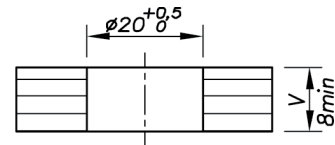
Description	Part Number
Door Stop	89-0018.300



## Type of Screw



## Glass Drilling

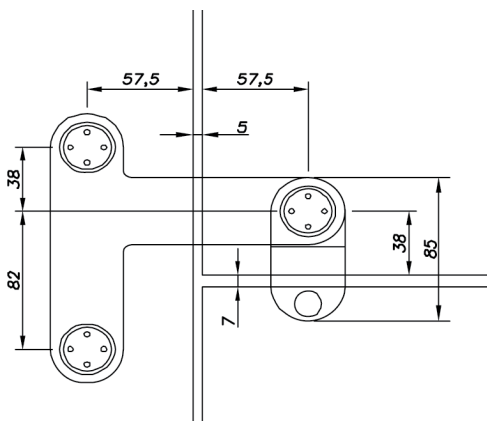


# High-lite/side-lite L plate assembly

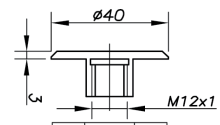


This assembly is the matching piece of the three way pivot patch, used in the opposing top corner to tie high-lite and side-lite panels together while maintaining a uniform style. Shown here with the above mentioned door stop installed.

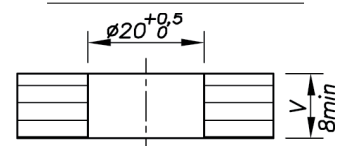
Description	Part Number
L Plate Assembly	89-0020



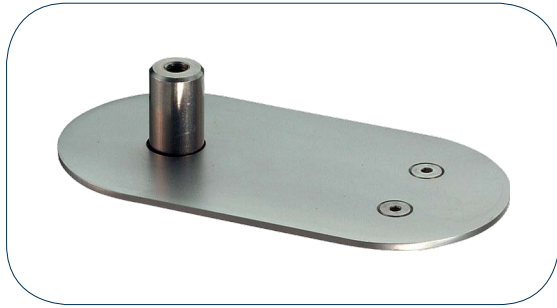
## Type of Screw



## Glass Drilling



# Floor pivot



Designed specifically to carry the door weight, this pivot is required when using Concealed Overhead Door Closers.

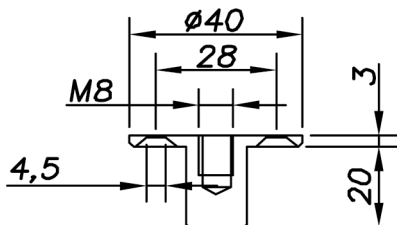
Description	Part Number
Floor Pivot	89-0018.200

# Fixed top pivot 40ø

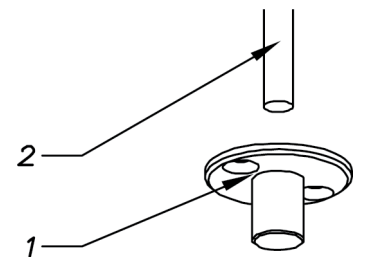


Used as a top pivot to support the rod, this pivot can be installed into masonry, timber or metal frames.

Description	Part Number
Fixed Top Pivot 40ø	89-0018.230



**Description**  
 (1) Bearing plate  
 (2) Threaded rod 8ø

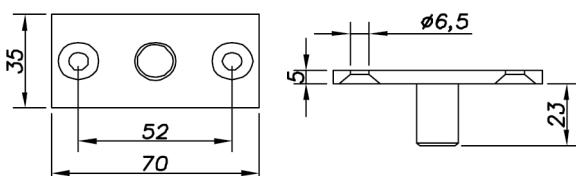


# Fixed top pivot 35 x 70



A rectangular version of the above Fixed Pivot, offering a slightly narrower fixing surface at 35mm wide.

Description	Part Number
Fixed Top Pivot 35x70	89-0018.240



**Description**  
 (1) Bearing plate

