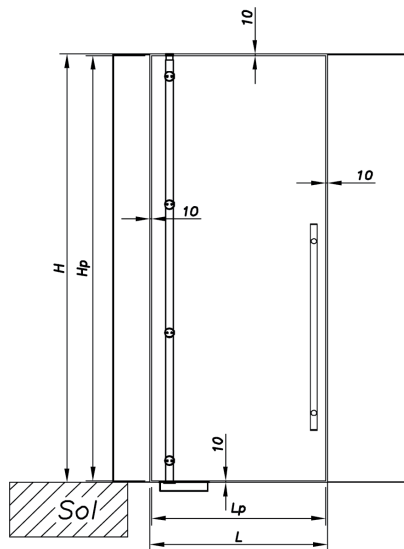


PIVOTING DOORS

40^Ø

SADEVdecor

Single door with solid surround



Pivot40-FS

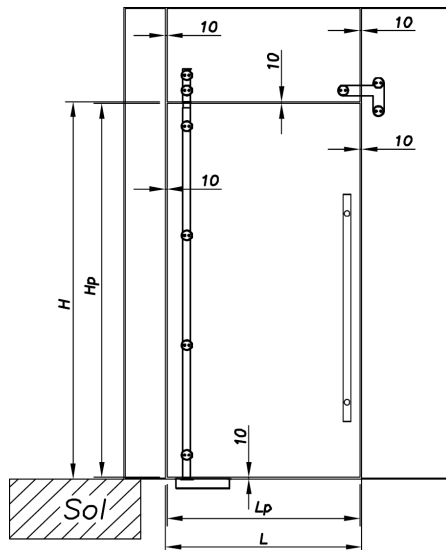
With the pivot rod supported between floor and transom, this simple installation method guarantees to make a feature of the 40mm Pivot rod and point fixings.

In this configuration, it is possible to use either In-floor or Concealed Overhead Hydraulic Closers. Heavy duty pivot blocks are also available for top and bottom, to create free swinging doors.

All configurations of the Pivot40 are capable of carrying a door weight of 160kg, thus allowing for doors up to 3000mm in height and 1400mm wide.

| | | |
|-------------|-------------|---------------------------------------|
| Part Number | 89-000.2301 | 2400mm rod, complete with all fixings |
| Part Number | 89-000.2302 | 3000mm rod, complete with all fixings |

Single door with high-lite & one fixed side lite



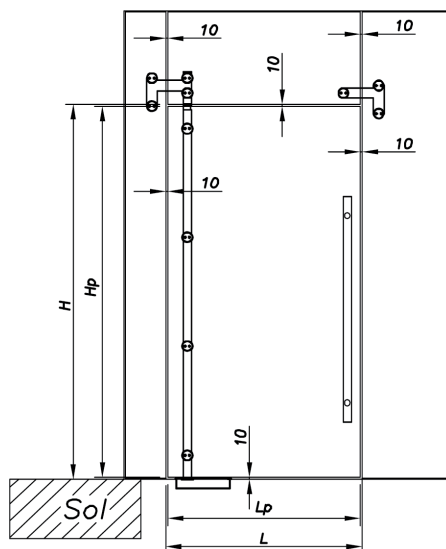
Pivot40-HS

With overhead glazed panels spanning from top of door to ceiling and one full height fixed glass side-lite. This configuration is extremely flexible in its use. Side-lites as narrow as 150mm can be used.

The Straight top pivot which attaches to the high-lite panel has been designed to create an extension of the pivot rod.

| | | |
|-------------|-------------|---------------------------------------|
| Part Number | 89-000.2303 | 2400mm rod, complete with all fixings |
| Part Number | 89-000.2304 | 3000mm rod, complete with all fixings |

Single door with full glass surround



Pivot40-FF

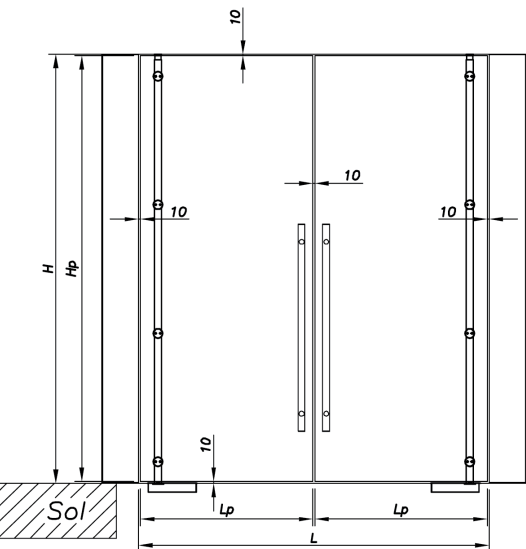
With an overhead glazed panel spanning from top of door to ceiling and two full height fixed glass side-lites, this creates a truly transparent facade. The unique Pivot40-FF hardware compliments doors that require strength and elegance.

Matching Inter-connecting top corner patches offer increased rigidity to the facade, while supporting the top pivot and optional door stop.

| | | |
|-------------|-------------|---------------------------------------|
| Part Number | 89-000.2305 | 2400mm rod, complete with all fixings |
| Part Number | 89-000.2306 | 3000mm rod, complete with all fixings |

H: Opening height, Hp: Glass height, L: Opening width, Lp: Glass Width

Double doors with solid surround



Pivot40-DFS

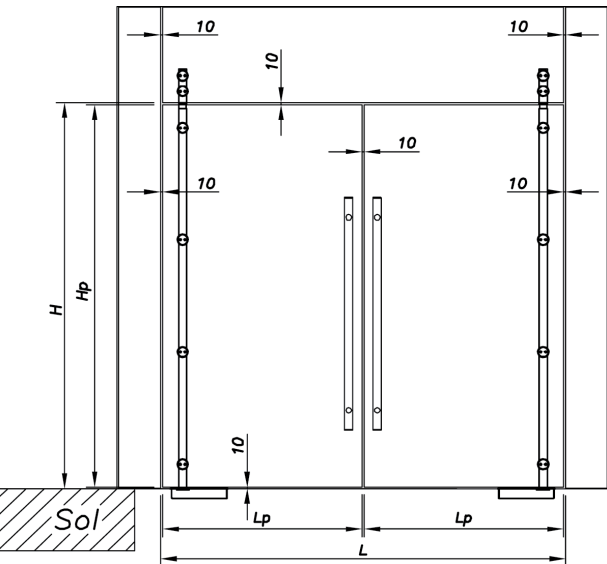
With the pivot rod supported between floor and transom, this simple installation method guarantees to make a feature of the 40mm Pivot rod and point fixings.

This extremely strong hardware is in its element in high traffic applications such as busy shop entrances, or internal partition doors.

In this configuration, it is possible to use either In-floor or Concealed Overhead Hydraulic Closers. Heavy duty pivot blocks are also available for top and bottom to create free swinging doors.

| | | |
|-------------|-------------|--|
| Part Number | 89-000.2307 | 2400mm 2 x rods, complete with all fixings |
| Part Number | 89-000.2308 | 3000mm 2 x rods, complete with all fixings |

Double doors with glass high-lite



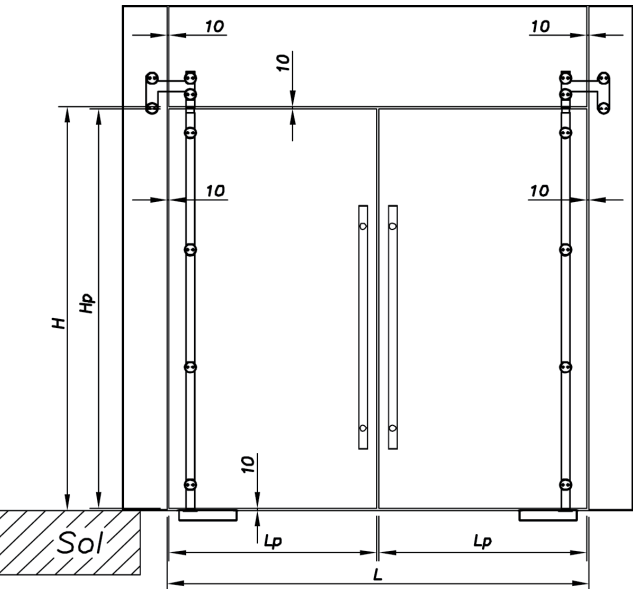
Pivot40-DHS

With doors able to span an opening 2600mm wide x 4000mm high, utilising a 1000mm high-lite panel. This configuration is simple to install yet capable of handling larger entrances.

The Straight top pivots which attach to the high-lite panels have been designed to create an extension of the pivot rods, maintaining the vertical appearance of all hardware.

| | | |
|-------------|-------------|--|
| Part Number | 89-000.2309 | 2400mm 2 x rods, complete with all fixings |
| Part Number | 89-000.2310 | 3000mm 2 x rods, complete with all fixings |

Double doors with full glass surround



Pivot40-DFF

With an overhead glazed panel spanning from top of door to ceiling and two full height fixed glass side-lites, this creates a truly transparent facade. The unique Pivot40-FF hardware compliments doors that require strength and elegance.

Matching inter-connecting top corner patches offer increased rigidity to the facade, while supporting the top pivot and optional door stop. Highly suited to premium shopfront installations.

| | | |
|-------------|-------------|--|
| Part Number | 89-000.2311 | 2400mm 2 x rods, complete with all fixings |
| Part Number | 89-000.2312 | 3000mm 2 x rods, complete with all fixings |

Pivot rod 40ø



Top rotation unit (2)

The top pivot is interchangeable to suit various door configurations.

Adjustment (1)

Unlimited vertical adjustment



Screws for glass

Cylindrical 55ø exclusively



Assembly (1)

Assembly is at the time of installation for each door fixing point. This ensures the best installation of the door on site.



Pivot rod 40ø

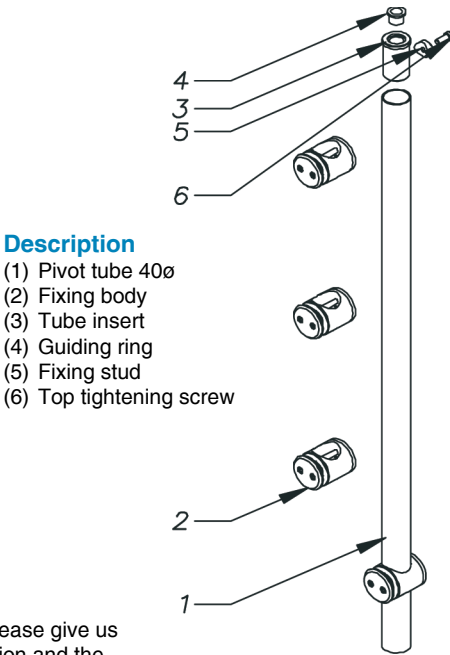
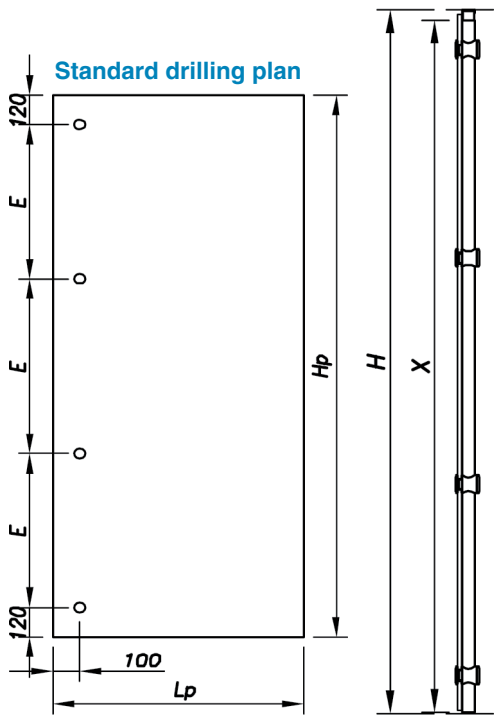
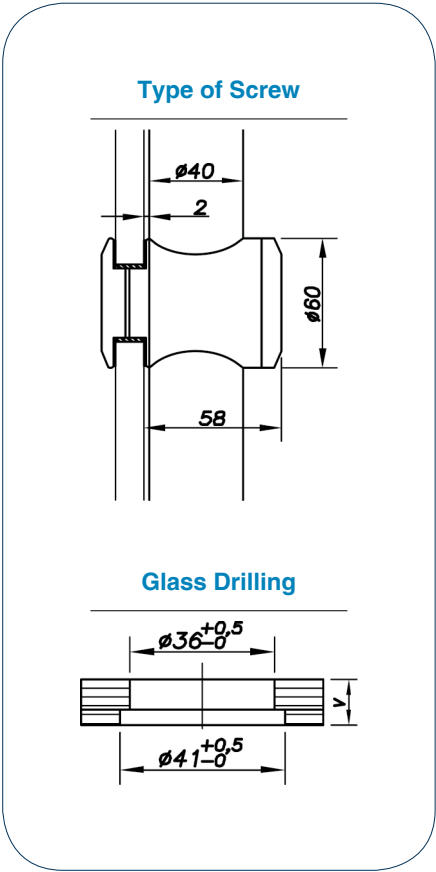
The Pivot40 system revolves around the high strength 40mm diameter pivot rod which always runs full height of the glass door. Attached are four highly machined nodes which are able to slide along the rod to the desired location, where they will be permanently fixed in place.

Rods can be supplied to suit In-ground or Concealed Overhead Door Closers. Standard assembly is for floor closers.

Supplied in two standard lengths as “kit form” or, cut to length and fully assembled, ready for installation.

All components in the Pivot40 system are manufactured from 316 stainless steel.

| Description | Part Number |
|----------------------|--------------|
| Pivot 40° 2400mm Rod | 89-0021.2400 |
| Pivot 40° 3000mm Rod | 89-0021.3000 |



- Description**
- (1) Pivot tube 40ø
 - (2) Fixing body
 - (3) Tube insert
 - (4) Guiding ring
 - (5) Fixing stud
 - (6) Top tightening screw

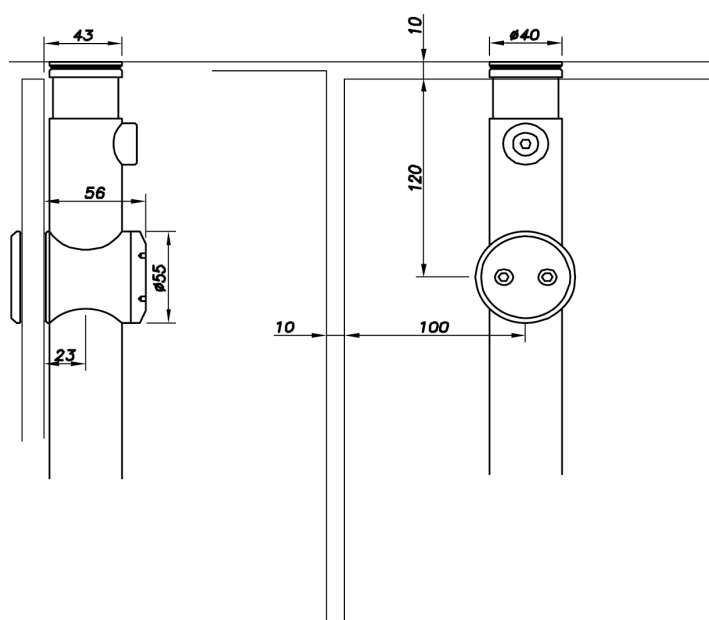
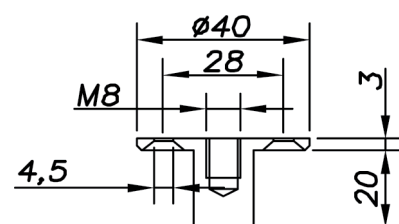
When ordering, please give us the height dimension and the glass thickness.

Direct top pivot



Low profile free pivot for top of door. This pivot is suitable for use on masonry, timber or metal door heads.

| Description | Part Number |
|-----------------|-------------|
| Fixed Top Pivot | 89-0022.200 |

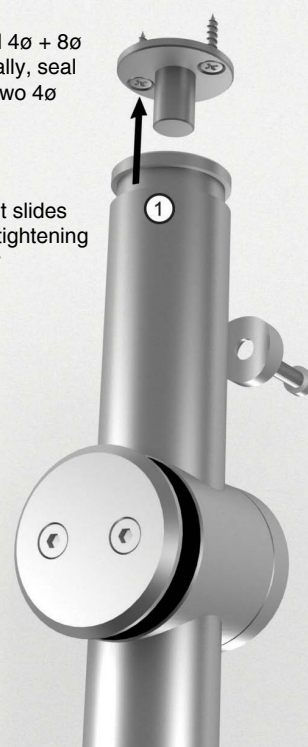


Screws

Countersunk screw head 4ø + 8ø threaded rod 70mm. Ideally, seal the 8ø rod chemically + two 4ø screws in anti-rotation.

Assembly (1)

The top rotation unit slides on the tube before tightening with the grub screw

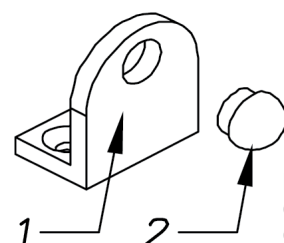
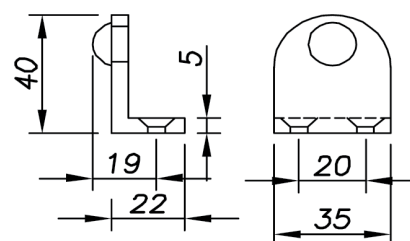


Door stop on floor/ wall / ceiling



Fabricated from 5mm thick stainless steel, this universal stop can be located on floor or ceiling to stop the door swinging both directions. Fitted with a small rubber bumper to avoid glass damage.

| Description | Part Number |
|-------------|-------------|
| Door Stop | 89-0022.300 |



Description
(1) Stop body
(2) Stop

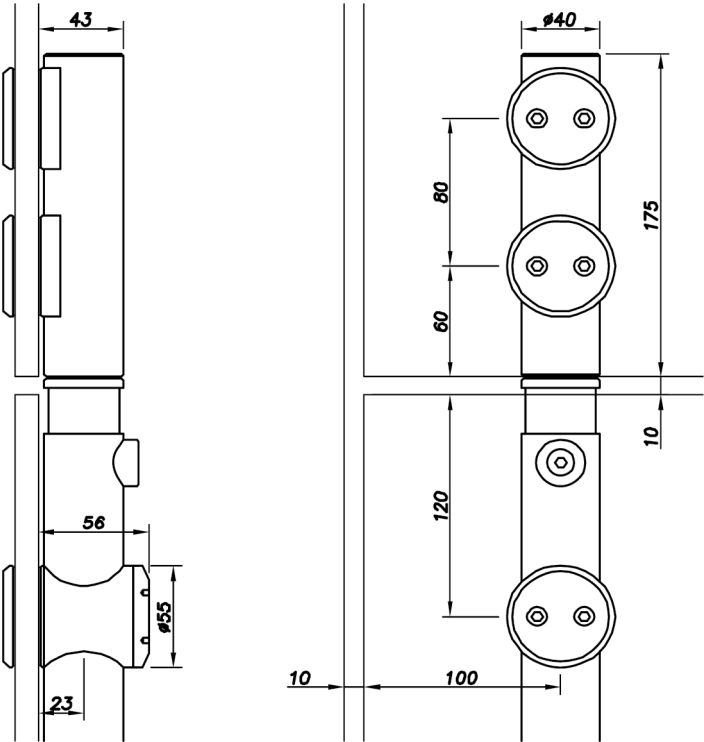
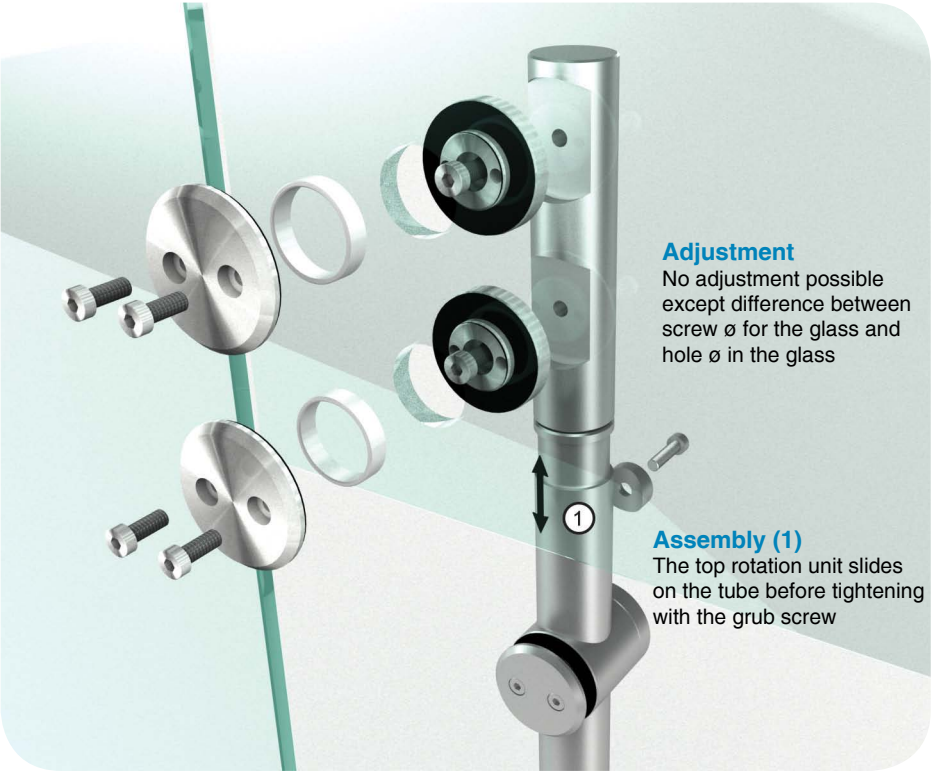
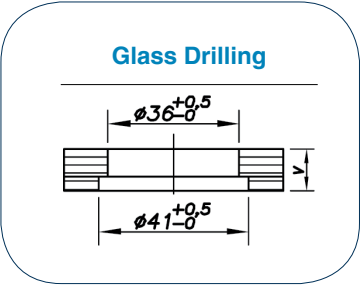
Top pivot for transom panel



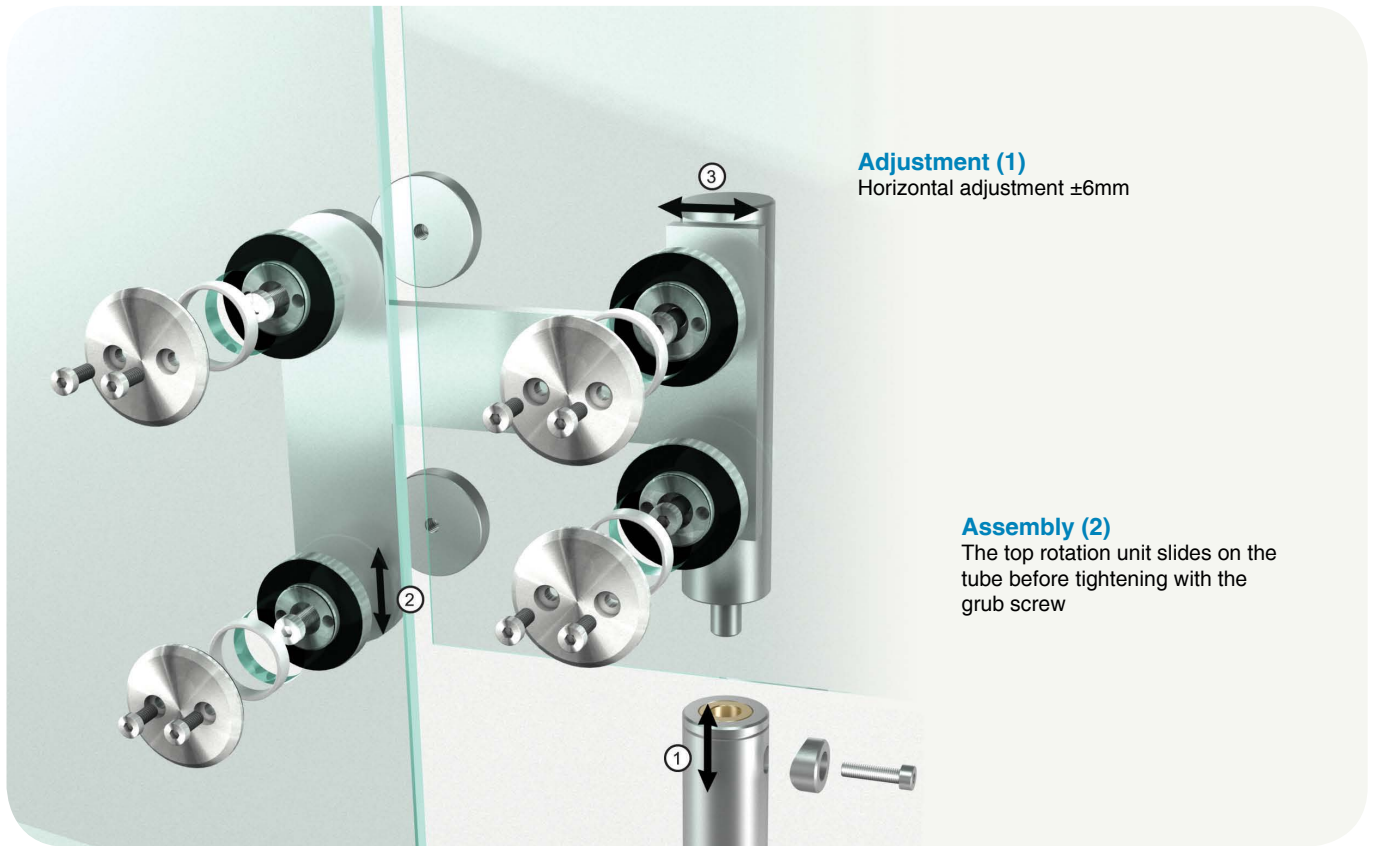
This top pivot is used when a glass high-lite panel is incorporated above the door. Machined from 40mm solid round bar, this pivot appears as an extension of the full length pivot rod.

Fitted with two 55mm diameter point fixings to ensure the stability of the pivot.

| Description | Part Number |
|-------------|-------------|
| Top Pivot | 89-0022.100 |



Top Pivot for connection to side-lite and high-lite

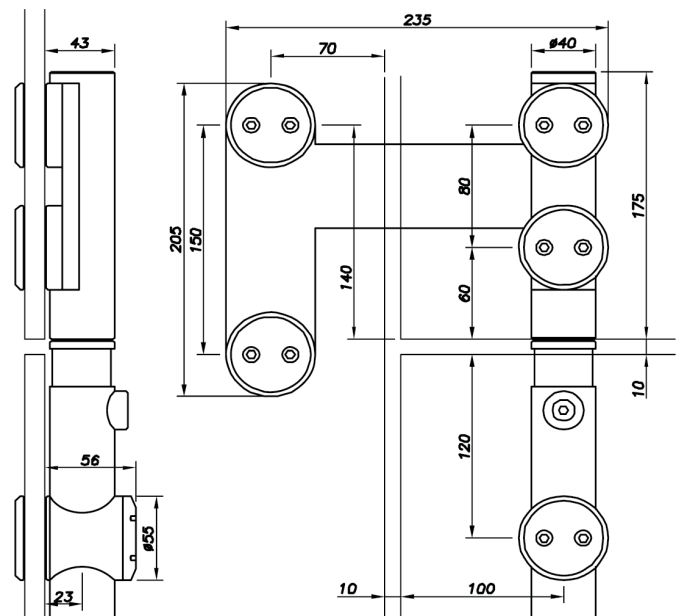
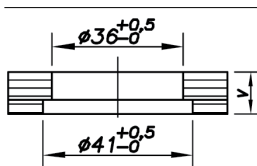


This assembly is used to tie the two fixed glass panels together, in addition to mounting the top pivot above the door. The L plate is fabricated from 10mm thick stainless while the pivot is machined from 40mm solid round bar.

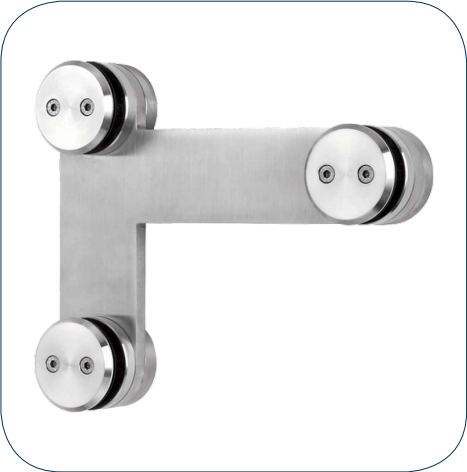
Fitted with two 55mm diameter point fixings on each panel to ensure the stability of the pivot and surrounding glass.

| Glass Thickness | Part Number |
|-----------------|-------------|
| Please Specify | 89-0022 |

Glass Drilling

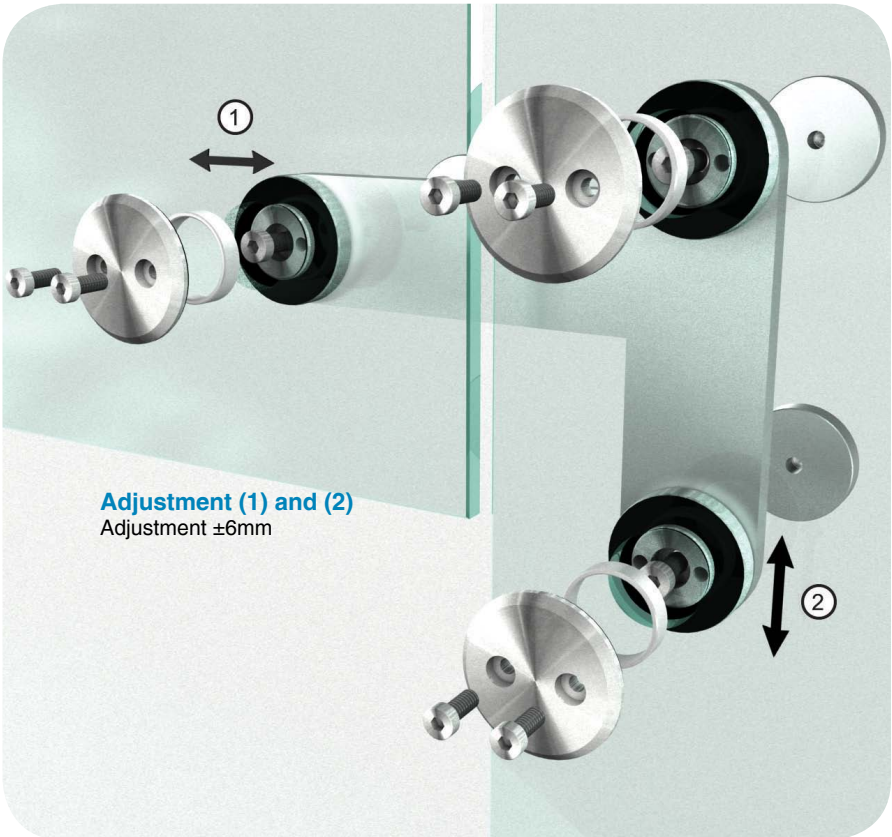
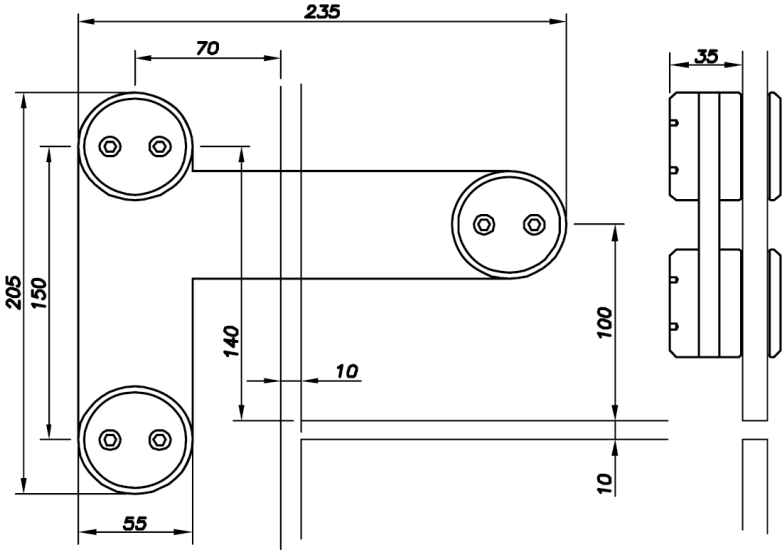
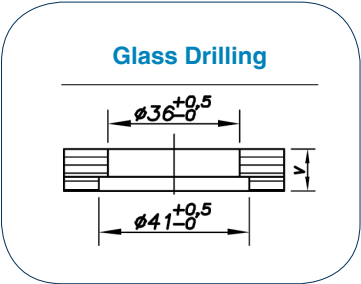


High-lite / Side-lite L plate assembly

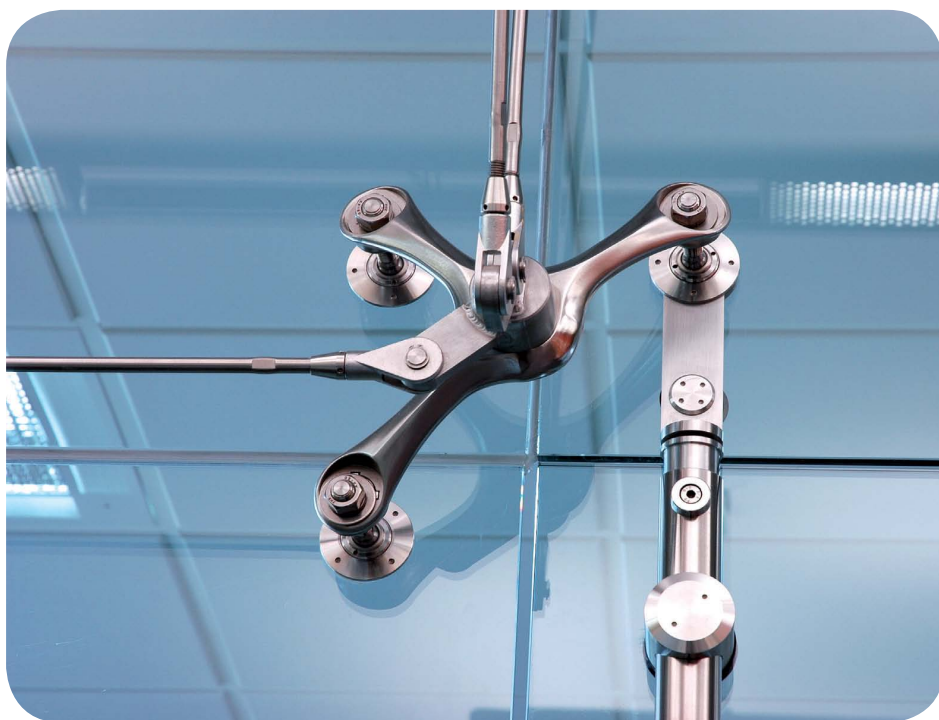


This assembly is the matching piece of the three way pivot patch, used in the opposing top corner to tie high-lite and side-lite panels together while maintaining a uniform style.

| Glass Thickness | Part Number |
|-----------------|-------------|
| To be stated | 89-0023 |



Top pivot on external bolted glass



| Glass Thickness | Part Number |
|-----------------|-------------|
| 12 to 21.5mm | 89-0022.500 |



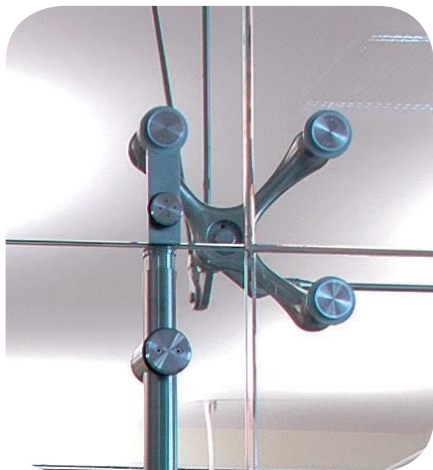
Assembly and type of ball joints (2)

Warning—the ball joint to be fitted to the square for external bolted glass will be 8mm longer than the other ball joints of the project. This system accepts fitting with R1001 type countersunk ball joints or R1003 type cylindrical ball joints

Assembly (1)

The top rotation unit slides on the tube before tightening with the grub screw

Top pivot on external bolted glass



Pages 34 and 35 show examples of how the Sadev Monti spider can be used to attach Pivot40 as part of a larger facade. Customised design of similar components is available from NFK, please contact our office for further information.

